



4KVision. LED. Image Management. Integration.

ENDOSCOPY

Revolutionizing Endoscopy

UHD 4K Video Imaging, High Output LED Light Source
Image Management System and Integration, synergized into one...

Simply controlled from a tablet



4KVision. LED. Image Management. Integration.



AR-3351-1000
10 mm, 0° 4K Laparoscope

Synergy^{UHD4} 4K imaging is a commanding imaging platform offered by Arthrex® featuring a true Ultra HD 4K programmable camera head, a LED “xenon-bright” light source, an image management system and fiber optic video over IP integration all in one tablet-controlled device. The network-based system allows live video streaming from any authorized remote viewer.

Synergy Surgeon App™

Arthrex's Synergy Surgeon App provides physicians with tools to manage stills, video recordings and patient education. Utilizing an iPad®, physicians can review, edit, annotate and tag stills and video recordings, as well as create and instantly transmit images and educational postoperative reports to patients.

With **Synergy**, our advancement in endoscopy is continued.

Synergy^{UHD4}™ 4K Imaging Platform

The Synergy^{UHD4} imaging platform is the first endoscopic 4K camera system on the market. The console integrates 4 pieces into 1 and revolutionizes endoscopic visualization and image management. The Synergy^{UHD4} camera system combines the latest technology, true 4K camera heads, LED lighting, image management and integration with an intuitive tablet controller. One console and one unique tablet interface simplifies uses, and programmable individual surgeon/procedure preferences enhance the user experience. The 4K image displayed on the monitor has 4 times the resolution of standard HD.

Synergy Consoles

AR-3200-0020	Synergy ^{UHD4} Console with Matrix
AR-3200-0021	Synergy ^{UHD4} Console



Synergy^{UHD4} Tablet Controller

Our unique and innovative remote “tablet” interface allows the users to remotely and efficiently enter patient information, surgeon preferences and image management settings only once. Synergy^{UHD4} may help reduce cost, OR times and increase efficiency.

Synergy^{UHD4} Tablet

AR-3200-1007	Synergy ^{UHD4} Digital Documentation Tablet
--------------	--

4K and HD Camera Heads

Synergy^{UHD4} camera heads provide true 4K or 1080p HD resolution. The 4K camera heads have four times the pixels compared to 1080p for unprecedented resolution and wider color gamut for precise color reproduction. The newly designed, smaller heads still carry the industry leading standard autoclavable warranty while maintaining the comfortable, ergonomic design started with the Synergy^{HD3}™ heads. With multiple configurations, the Synergy^{UHD4} heads are adaptable to multi-specialty accounts and continue to lead the market in arthroscopy.

Camera Heads

AR-3210-0018	HD Synergy ^{UHD4} Camera Head, autoclavable
AR-3210-0021	HD Synergy ^{UHD4} C-Mount Camera Head, autoclavable
AR-3210-0022	HD Synergy ^{UHD4} C-Mount Camera Head, 0°, autoclavable
AR-3210-0026	4K Synergy ^{UHD4} C-Mount Camera Head, 0°, autoclavable
AR-3210-0028	4K Synergy ^{UHD4} C-Mount Camera Head w/20' cable, autoclavable
AR-3210-0029	4K Synergy ^{UHD4} Camera Head, broadband, autoclavable
AR-3210-0030	4K Synergy ^{UHD4} C-Mount Camera Head, broadband, autoclavable
AR-3210-0031	4K Synergy ^{UHD4} Ultra Camera Head, autoclavable
AR-3210-0032	4K Synergy ^{UHD4} Ultra C-Mount Camera Head, autoclavable

C-Mount Couplers

AR-3210-0006	C-Mount HD Optical Zoom Coupler
AR-3210-0009	C-Mount Right Angle Coupler



AR-3210-0029
4K Synergy^{UHD4} Camera Head, autoclavable



AR-3210-0030
4K Synergy^{UHD4} C-Mount Camera Head, autoclavable

4K Synergy^{UHD4} C-Mount Inline Camera Head with Right Angle Coupler



4K and HD Sheathless Endoscopes

The Sheathless Endoscope product line has expanded to include a 5 mm 4K version. The state-of-the-art lens design and larger diameter increases the resolution and brightness producing an unprecedented image and more accurate color reproduction of the anatomy. The Sheathless Endoscope revolutionizes the way arthroscopic and ENT procedures are performed. The Sheathless Endoscope is designed and constructed with additional structural support along its length to stand up to normal stresses without a sheath.

Sheathless Endoscope

AR-3350-5430	4K Sheathless Endoscope, 30°, 5 mm x 160 mm
AR-3350-5470	4K Sheathless Endoscope, 70°, 5 mm x 162 mm
AR-3350-5030	HD Sheathless Endoscope, 30°, 4 mm x 156 mm
AR-3350-5070	HD Sheathless Endoscope, 70°, 4 mm x 158 mm
AR-3350-3530	HD Sheathless Endoscope, 30°, 3 mm x 134 mm
AR-3350-3570	HD Sheathless Endoscope, 70°, 3 mm x 138 mm



AR-3350-5430
4K Sheathless
Endoscope, 30°

Light Guides

AR-3240-3527	Fused Light Guide, Wolf, 3.5 mm x 2.7 m (9')
AR-3240-5027	Fused Light Guide, Wolf, 5 mm x 2.7 m (9')
AR-3240-5040	Fused Light Guide, Wolf, 5 mm x 4 m (13.4')
AR-3240-5028	Fused Light Guide, Wolf, 5 mm x 2.7 m (9'), gray
AR-3240-3530	Fused Light Guide, Universal, 3.5 mm x 2.7 m (9'), gray

Adapters

AR-3240-3530W	Wolf Adapter
AR-3240-3530S	Storz Adapter
AR-3240-3530O	Olympus Adapter
AR-3240-3530A	ACMI Adapter



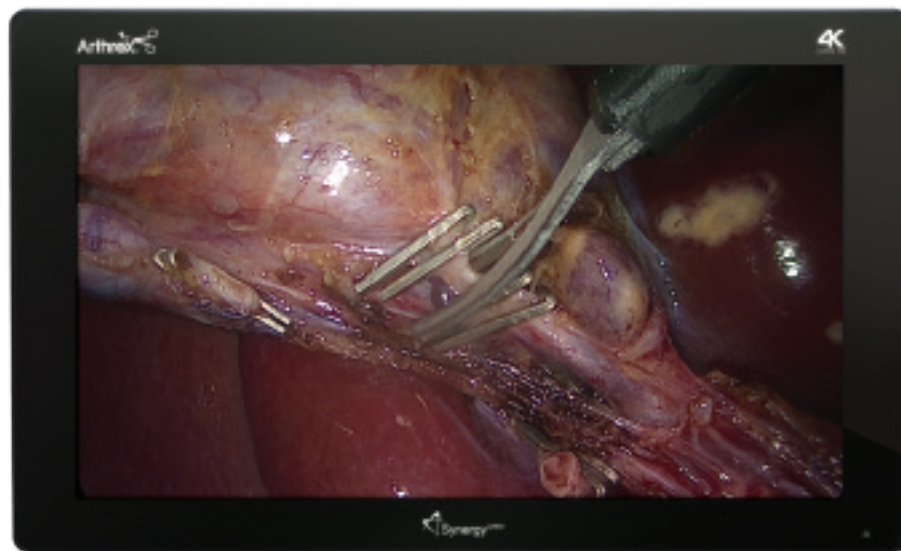
AR-3240-5027
Light Guide

UHD 4K and 1080p HD Monitors

- UHD 4K medical display and 1080p HD medical display options
- Picture-in-picture and side-by-side display modes
- Versatile multi-format signal support
- With and without Synergy Matrix System™ enabled

UHD 4K and 1080p HD Monitors

AR-3250-2602	HD Monitor, OLED, 25"
AR-3250-2604	HD Monitor with Decoder, LED, 26"
AR-3250-2606	HD Standard Monitor, LED, 26"
AR-3250-3206	HD Monitor, LED, 32"
AR-3250-3207	UHD 4K Monitor, LED, Multimedia, 32", black
AR-3250-3210	UHD 4K Monitor with Decoder, LED, Multimedia, 32", black
703458-15	Monitor Cover, 26" Black
703459-15	Monitor Cover, 32" Black
703510-15	Tablet Cover for UHD4 tablet, Black



32" UHD 4K Monitor

Insufflation

The Arthrex® 50L Insufflator has an intuitive touch screen interface and Synergy heads up display. The unit features high flow and bariatric modes, integrated gas heating, venting system and fluid sensor to help prevent cross contamination.

AR-3290-0004	Synergy Insufflator (English, German, French, Spanish)
AR-3290-1001	Insufflation Tube Set, ISO Connector, disposable (pack of 10)
AR-3290-1002	Tube Set ISO Connector, reusable 20x, autoclavable
AR-3290-1007	Disposable Heated Tube Set (pack of 10)
AR-3290-1008	Heated Tube Set, reusable 100x, autoclavable
1201198	Filter for Insufflation, disposable, sterile, ISO-ISO (pack of 25)
2201726	ISO Barb Adapter
2200694	Gas Connection for CO ₂ Bottle Gas Supply US
2200702	Gas Connection for CO ₂ House Gas Supply DISS
2200703	Gas Connection for CO ₂ House Gas Supply NIST
2200873	High Pressure Hose Device US/ Bottle US, 1.5 m
2200880	High Pressure Hose Device US/ Bottle DIN, 1.5 m
2200881	High Pressure Hose Device US/ Bottle ISO, 1.5 m
2200875	High Pressure Hose Device US/ Bottle PIN Index, 1.5 m
2204458	DISS / DISS Hose for House Gas Supply
2200142	NIST/DIN Hose for House Gas Supply, 3 m
2200144	NIST/DIN Hose for House Gas Supply, 5 m
2200146	NIST/Norme Francaise Hose for House Gas Supply, 3 m
2200147	NIST/Norme Francaise Hose for House Gas Supply, 5 m
2200149	NIST/UNI (Italian) Hose for House Gas Supply, 3 m
2200150	NIST/UNI (Italian) Hose for House Gas Supply, 5 m
2200138	NIST/AGA Hose for House Gas Supply, 3 m
2200139	NIST/AGA Hose for House Gas Supply, 5 m
1200424	Insufflator Sterile Cover for Remote Control (pack of 10)
2201313	Power Supply Cord US, 2.5 m
2201307	Power Supply Cord Euro, 2 m
2201310	Power Supply Cord UK, 2 m
002433-00	Dual Yoke CO ₂ Switching Assembly



AR-3290-0004
Synergy Insufflator

Laparoscopes

3 mm Laparoscopes

AR-3351-3000	HD Laparoscope, 0°, 3.0 mm x 207 mm
AR-3351-3030	HD Laparoscope, 30°, 3.0 mm x 207 mm

5.5 mm Laparoscopes

AR-3351-5500	4K Laparoscope, 0°, 5.5 mm x 300 mm
AR-3351-5530	4K Laparoscope, 30°, 5.5 mm x 300 mm
AR-3351-5545	4K Laparoscope, 45°, 5.5 mm x 302 mm
AR-3351-5500L	4K Laparoscope, Ext Length, 0°, 5.5 mm x 424 mm
AR-3351-5530L	4K Laparoscope, Ext Length, 30°, 5.5 mm x 424 mm
AR-3351-5545L	4K Laparoscope, Ext Length, 45°, 5.5 mm x 425 mm

5.5 mm High Magnification Laparoscopes

AR-3352-5500	4K Laparoscope, 0°, 5.5 mm x 300 mm, Hi-Mag
AR-3352-5530	4K Laparoscope, 30°, 5.5 mm x 300 mm, Hi-Mag
AR-3352-5545	4K Laparoscope, 45°, 5.5 mm x 302 mm, Hi-Mag
AR-3352-5500L	4K Laparoscope, Ext Length, 0°, 5.5 mm x 424 mm, Hi-Mag
AR-3352-5530L	4K Laparoscope, Ext Length, 30°, 5.5 mm x 424 mm, Hi-Mag
AR-3352-5545L	4K Laparoscope, Ext Length, 45°, 5.5 mm x 425 mm, Hi-Mag

10 mm Laparoscopes

AR-3351-1000	4K Laparoscope, 0°, 10 mm x 330 mm
AR-3351-1030	4K Laparoscope, 30°, 10 mm x 330 mm
AR-3351-1045	4K Laparoscope, 45°, 10 mm x 333 mm
AR-3351-1000L	4K Laparoscope, Ext Length, 0°, 10 mm x 455 mm
AR-3351-1030L	4K Laparoscope, Ext Length, 30°, 10 mm x 455 mm
AR-3351-1045L	4K Laparoscope, Ext Length, 45°, 10 mm x 459 mm



HD Endoscopes

AR-3000AW	HD Endoscope, 0°, 4 mm x 174 mm, Storz style
AR-3030AW	HD Endoscope, 30°, 4 mm x 176 mm, Storz style
AR-3045AW	HD Endoscope, 45°, 4 mm x 176 mm, Storz style
AR-3070AW	HD Endoscope, 70°, 4 mm x 177 mm, Storz style
AR-3030AWR	HD Endoscope, 30°, 4 mm x 176 mm, Storz style
AR-3045AWR	HD Endoscope, 45°, 4 mm x 176 mm, Storz style
AR-3070AWR	HD Endoscope, 70°, 4 mm x 177 mm, Storz style

Video Cart Options

Features

- Multiple configurations
- Adjustable shelves
- Printer access from rear of cart on top shelf
- 38" extended boom arm
- 200° rotatable touch panel arm
- Transformer included
- Dimensions 30" (L) x 30" (W) x 60" (H)

Video Cart

- 002317-00 Video Cart, extended boom arm (includes Touch Panel Arm and Footswitch Holder)
- 002386-00 Video Cart with Static Mount

Optional Accessories

- 002361-00 Adjustable Shelf
- 002321-00 CO₂ Bottle Holder with Latch
- 002318-00 Pull-Out Pump Shelf
- 304957-00 IV Bag Hanger, left
- 303914-00 Drawer without Adjustable Shelf

Printer

- UP-DR80MD Sony Printer
- UPC-R81MD Media Pack, letter size paper and ribbon



UP-DR80MD
Sony Printer



Instrument Cases

- AR-3100 Scope Case
- AR-3101C Video Instrument Case
- AR-3102C Scope System Case
- AR-3103C Laparoscope Instrument Case, holds two
- AR-3104C Laparoscope Instrument Case, extended length, holds two
- AR-3105C Mid-sized Video Instrument Case
- AR-3106C Synergy Camera Head Case
- AR-3200C Hip Scope Instrument Case



AR-3103C
Laparoscope Instrument Case



AR-3104C
Laparoscope Instrument Case, extended length

Accessory & Replacement Components

Synergy^{UHD4™} Accessories

- AR-3200-1010 Secure Key-USB 2.0 Flash Drive 4GB
- AR-3200-1012 Secure Key-USB 2.0 Flash Drive 16GB
- AR-3200-1040 Synergy System Integration Cable Kit
- AR-3201-1005 Input/Output 1080p Converter
- AR-3201-1006 Wireless Router
- AR-3250-0001 Wireless DVI Kit

Secondary Monitor Stand

Features

- Small footprint
- Adjustable monitor height
- Large casters for ease of mobility
- Locking casters
- Dimensions 23" (L) x 22" (W) x 57.5" (H)

Secondary Monitor Stand

- 304830-00 Secondary Monitor Stand
- 304813-01 Shelf for Monitor Stand
- 002313-00 Four Outlet Power Strip
- 304855-00 Tablet Arm for Monitor Stand



17" Extendable Height

Power Supply Bracket

Cord Wrap

Small Footprint

Gas Strut Foot Pedal for adjusting height

This description of technique is provided as an educational tool and clinical aid to assist properly licensed medical professionals in the usage of specific Arthrex® products. As part of this professional usage, the medical professional must use their professional judgment in making any final determinations in product usage and technique. In doing so, the medical professional should rely on their own training and experience, and should conduct a thorough review of pertinent medical literature and the product's Directions For Use. Postoperative management is patient specific and dependent on the treating professional's assessment. Individual results will vary and not all patients will experience the same postoperative activity level or outcomes.



<http://cptr.it/endoscopy>

View U.S. patent information at www.arthrex.com/corporate/virtual-patent-marking

© 2017 Arthrex, Inc. All rights reserved. LB1-00009-EN_E