

Synergy^{HD3} Quick Set-Up Guide

Depictions in this Set-Up guide are for general layout and reference only.

Synergy^{HD3} System

Synergy^{HD3} Console, Tablet, 1080p Autoclavable Camera Head and Cables (A,C)

Synergy^{HD3} Tablet and Docking Station (E)



VIDEO CART AND BOOM ARM

Monitor and (optional) Printer

Arthrex Synergy HD Monitor and Cables (A,C,D)

Sony UPDR80MD Printer and Cables (B,C)



Cables



A
DVI



B
USB



C
Power Cord



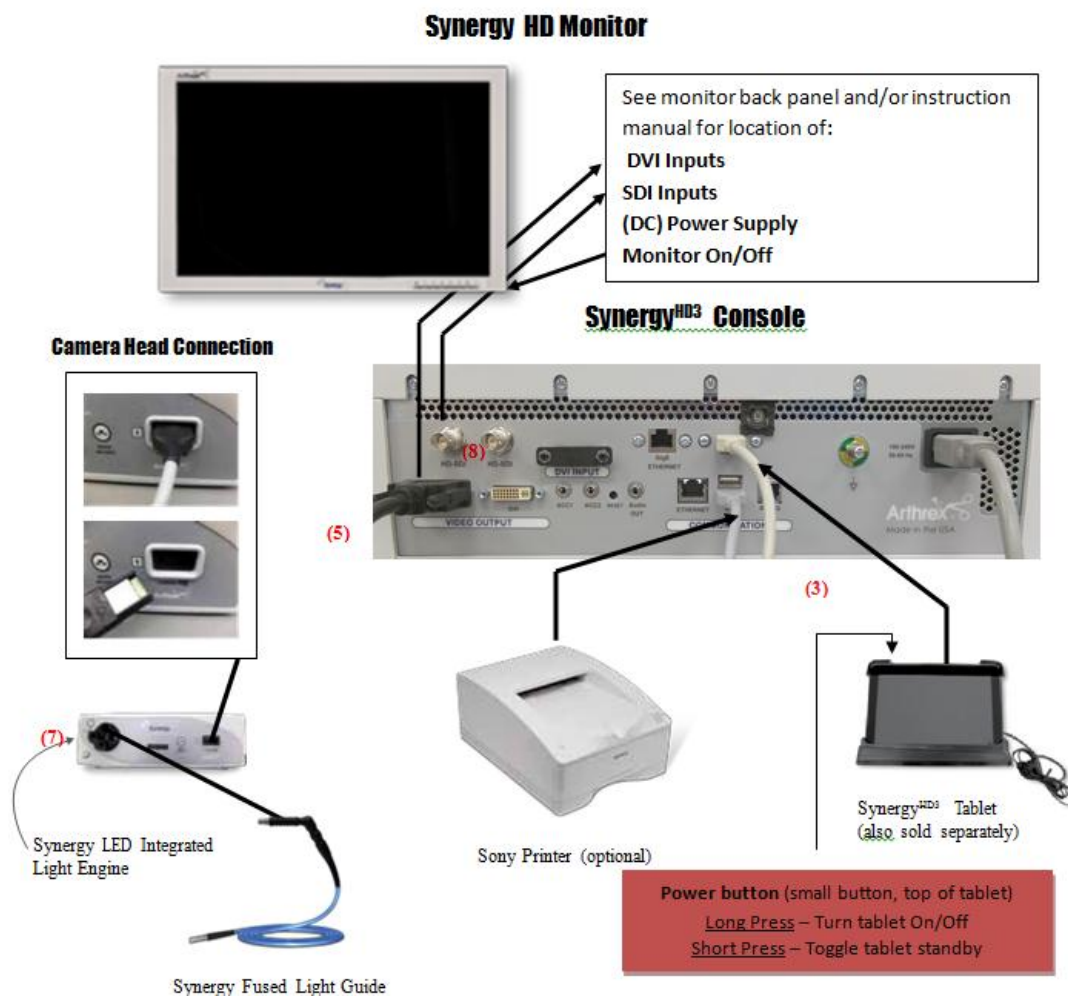
D
Monitor Power



E
Tablet Dock

Synergy^{HD3} Quick Set-Up Guide

- 1) Place synergy console (CCU) on tower shelf and connect power cord (C) to the back of the console as shown
- 2) Attach monitor to the tower and connect monitor DC power cable (D) to the rear panel of the monitor as shown
- 3) Attach Synergy Tablet to tablet arm and connect the cable from the docking station (E) to the rear panel of the Synergy console labeled "tablet" as shown
- 4) Using the provided DVI cable (A) connect one end to the rear panel of the Synergy console labeled DVI output as shown
- 5) Connect the other end of the DVI cable (A) to the rear panel of the monitor labeled DVI input
- 6) Power up units in the following order: monitor, tablet, console (start-up screen should look like picture on front)
- 7) Press the LED "on" button on the front of the console to turn the light source on
- 8) SDI/3G (optional video output)



For additional assistance using this product, please call:

Arthrex Tech Support Hotline at 1-888-420-9393, Monday - Friday, 9:00 am to 5:00 pm EST
Arthrex GmbH at +49 89 909005-0 or techsupport@arthrex.de from 8:00 am to 5:00 pm CET



Arthrex, Inc
1370 Creekside
Naples, FL 34108, USA
+1 (800)-934-4404

Arthrex, GmbH
Erwin-Hielscher-Strasse 9
81249 München, Germany
+49 89 909005-0