

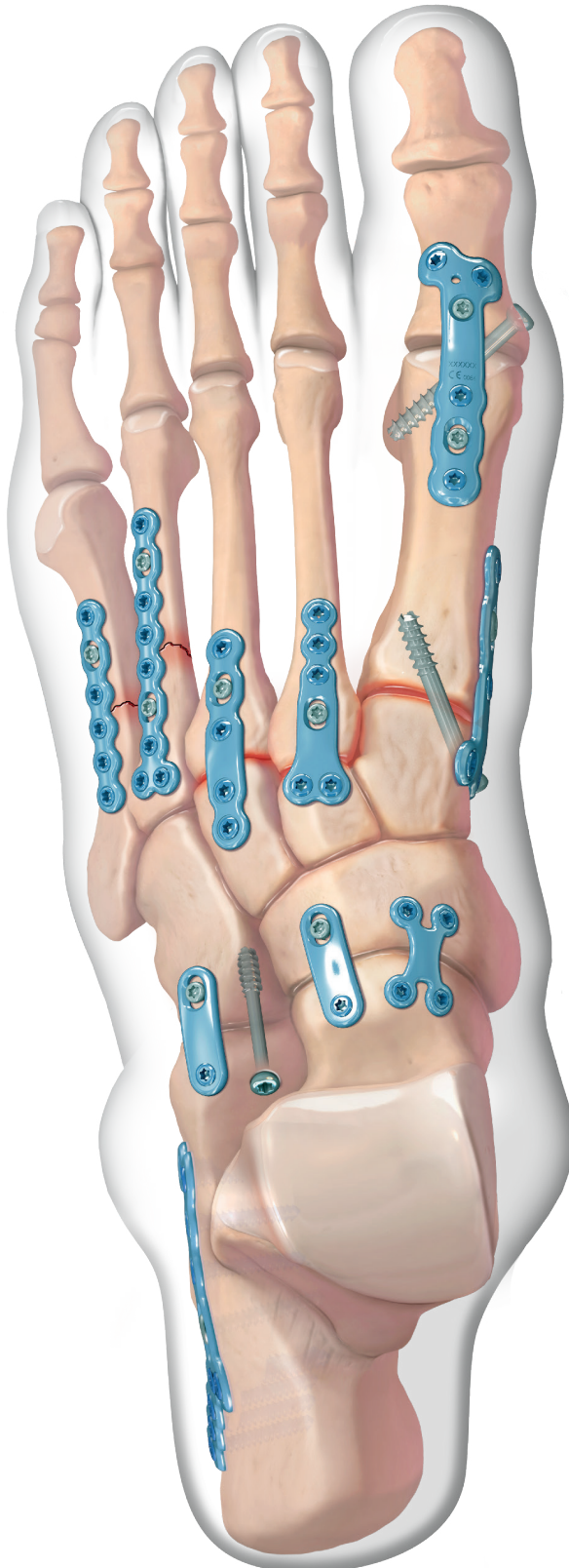
# COMPREHENSIVE FOOT SYSTEM

A comprehensive plating system for all types of fusions, fractures and osteotomies of the foot

Forefoot

Midfoot

Hindfoot



Arthrex®

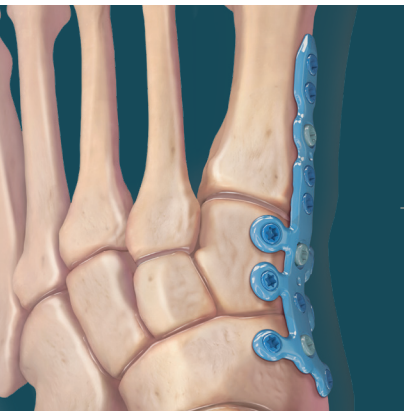
The Comprehensive Foot System family of plates provide solutions for multiple injuries of the foot.



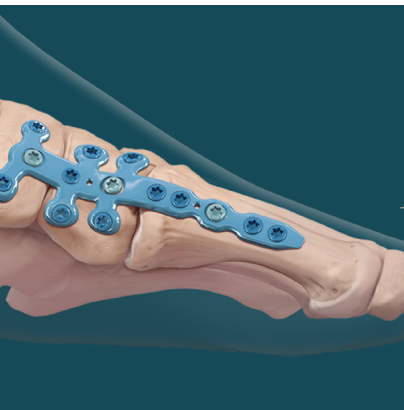
X-Plate



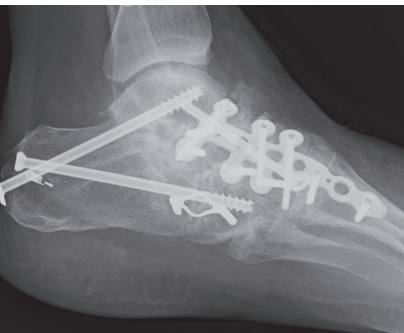
Opening Wedge Plate  
Postoperative



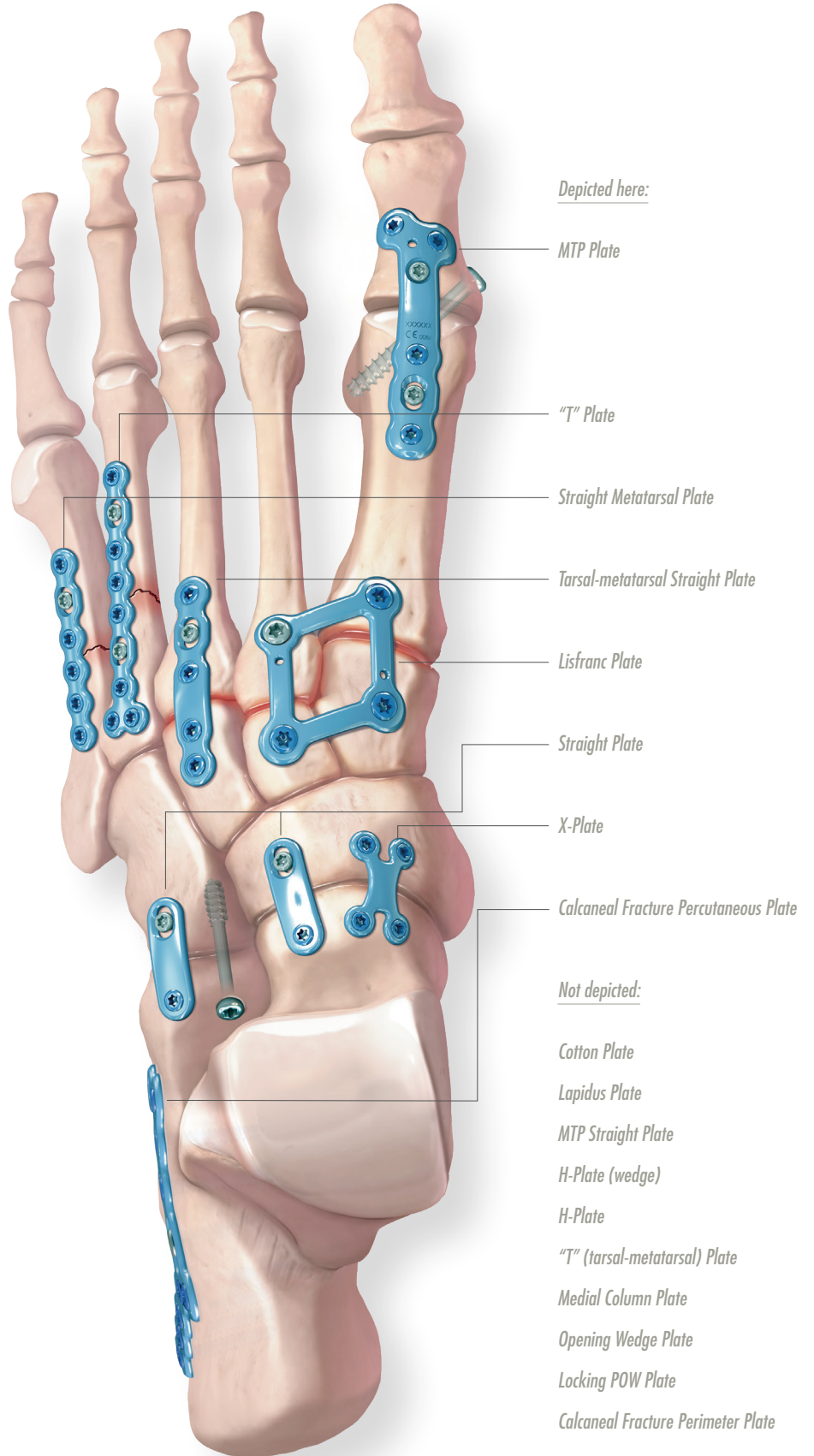
Medial Column Plate  
(dorsal view)



Medial Column Plate  
(medial view)



Medial Column Plate  
Postoperative



Depicted here:

MTP Plate

"T" Plate

Straight Metatarsal Plate

Tarsal-metatarsal Straight Plate

Lisfranc Plate

Straight Plate

X-Plate

Calcaneal Fracture Percutaneous Plate

Not depicted:

Cotton Plate

Lapidus Plate

MTP Straight Plate

H-Plate (wedge)

H-Plate

"T" (tarsal-metatarsal) Plate

Medial Column Plate

Opening Wedge Plate

Locking POW Plate

Calcaneal Fracture Perimeter Plate

Calcaneal Fracture Percutaneous Plate  
(lateral view)

Preoperative

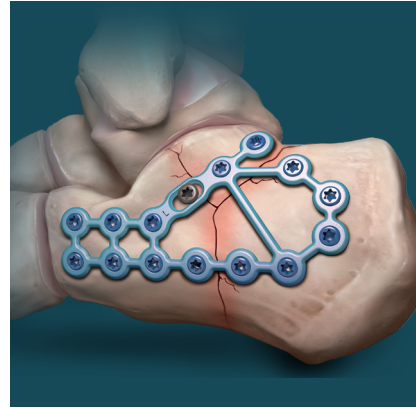


Postoperative



Calcaneal Fracture Perimeter Plate  
(lateral view)

Preoperative



Postoperative



Comprehensive Foot System

# The Comprehensive Foot System provides an infinite number of solutions for injuries of the midfoot, forefoot and hindfoot.

This plating system combines many of our current midfoot, forefoot and hindfoot plate and screw systems into one set (AR-8950S). The set is divided into 2.4/3.0 mm and 3.5/4.0 mm modules (AR-8950S-01 and AR-8950S-02) for convenience, housing the new Metatarsal Plates, TMT Plates, X-Plates, Calcaneus Plates, revised H-Plates and newest addition, the Medial Column Plates. Also included in the set are the Lapidus, Lisfranc, Opening Wedge, and MTP Plates. The set includes locking and nonlocking options for 2.4 mm, 3.0 mm, 3.5 mm, and 4.0 mm screws, along with 3.0 mm and 4.0 mm cannulated screws, and the Variable Screw Caddy.

Because all the implants are presented together, the surgeon has the flexibility of choosing the ideal plate for any need. In addition, the new Mini Joint Distractor offers greater flexibility for joint preparation, visualization and intra-op compression of the fracture or fusion site.

## Contoured, Low Profile Plates

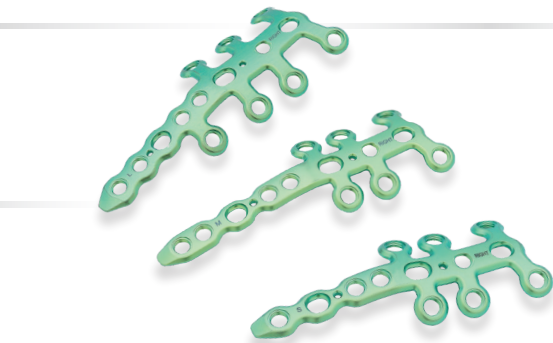
Lapidus Plates



Lisfranc Plates (right and left)



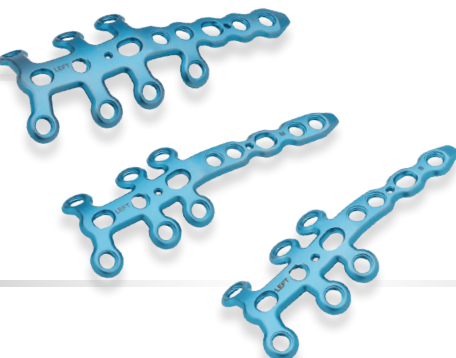
H-Plates (wedge)



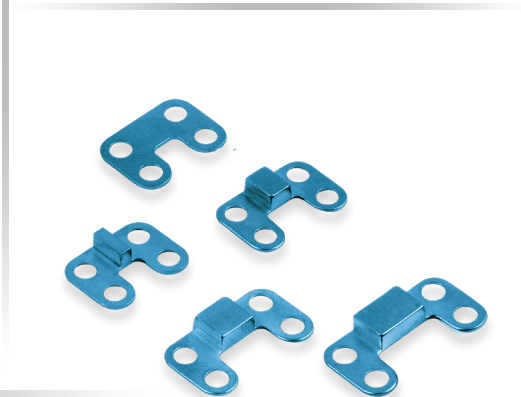
H-Plates



Medial Column Plates (right)



Medial Column Plates (left)



Cotton Plates

*Metatarsal Fracture  
and Utility Plates*

*Straight Plates*

*"T" Plates*

*Low Profile, contoured, plates  
in multiple configurations*

*Locking POW Plates*

*Opening Wedge Plates*

*"T" Plates*

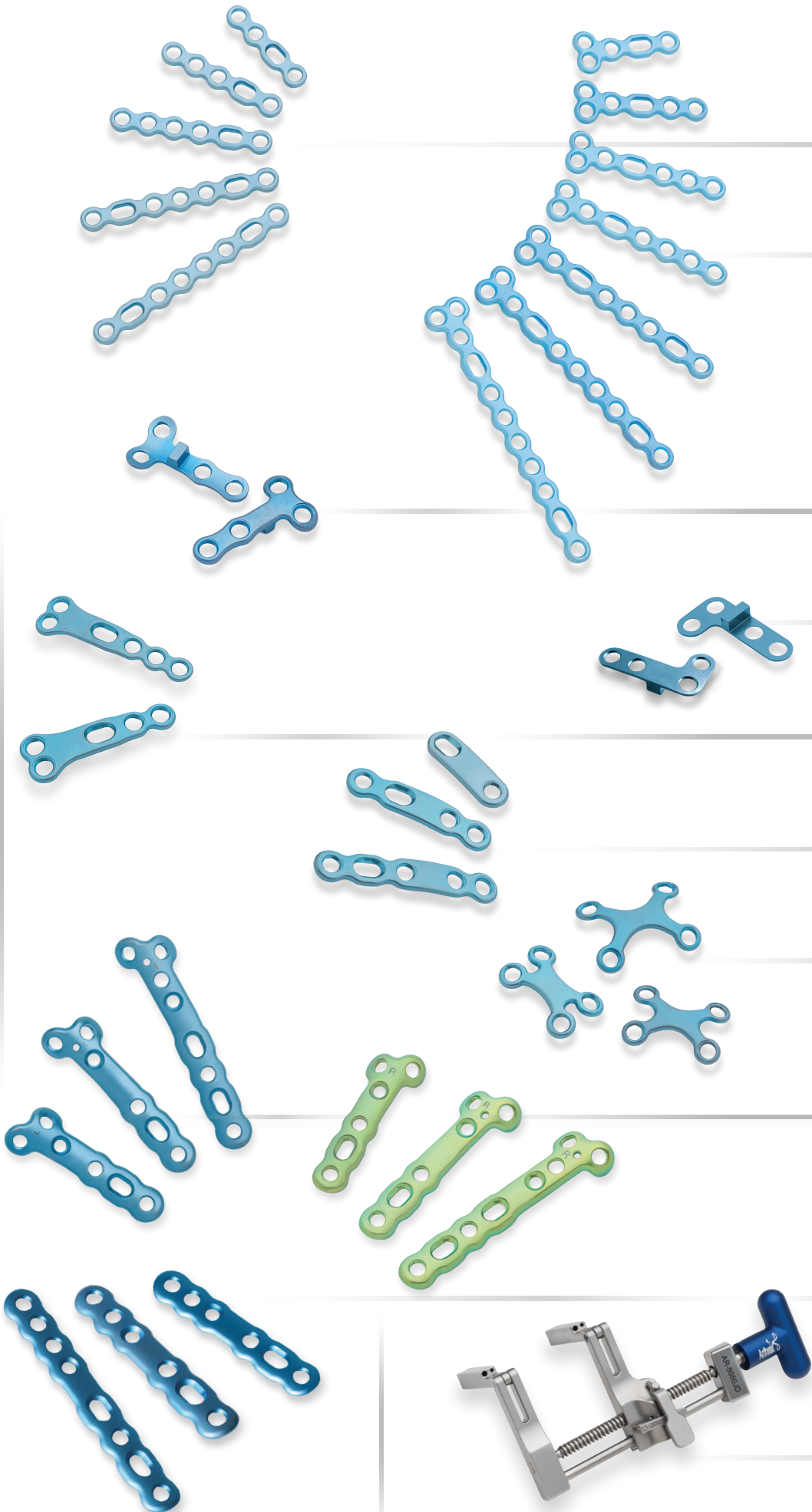
*Straight Plates*

*X-Plates*

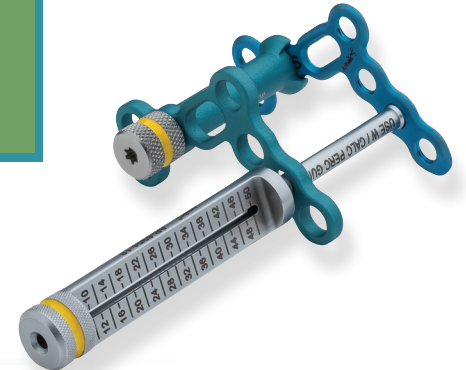
*MTP Plates (right and left)*

*MTP Straight Plates*

*Mini Joint Distractor  
Compression and distraction  
in one device*



# The Comprehensive Foot System provides additional solutions for fractures of the calcaneus.



*Seventeen Variable Angle Locking Plates in one system*

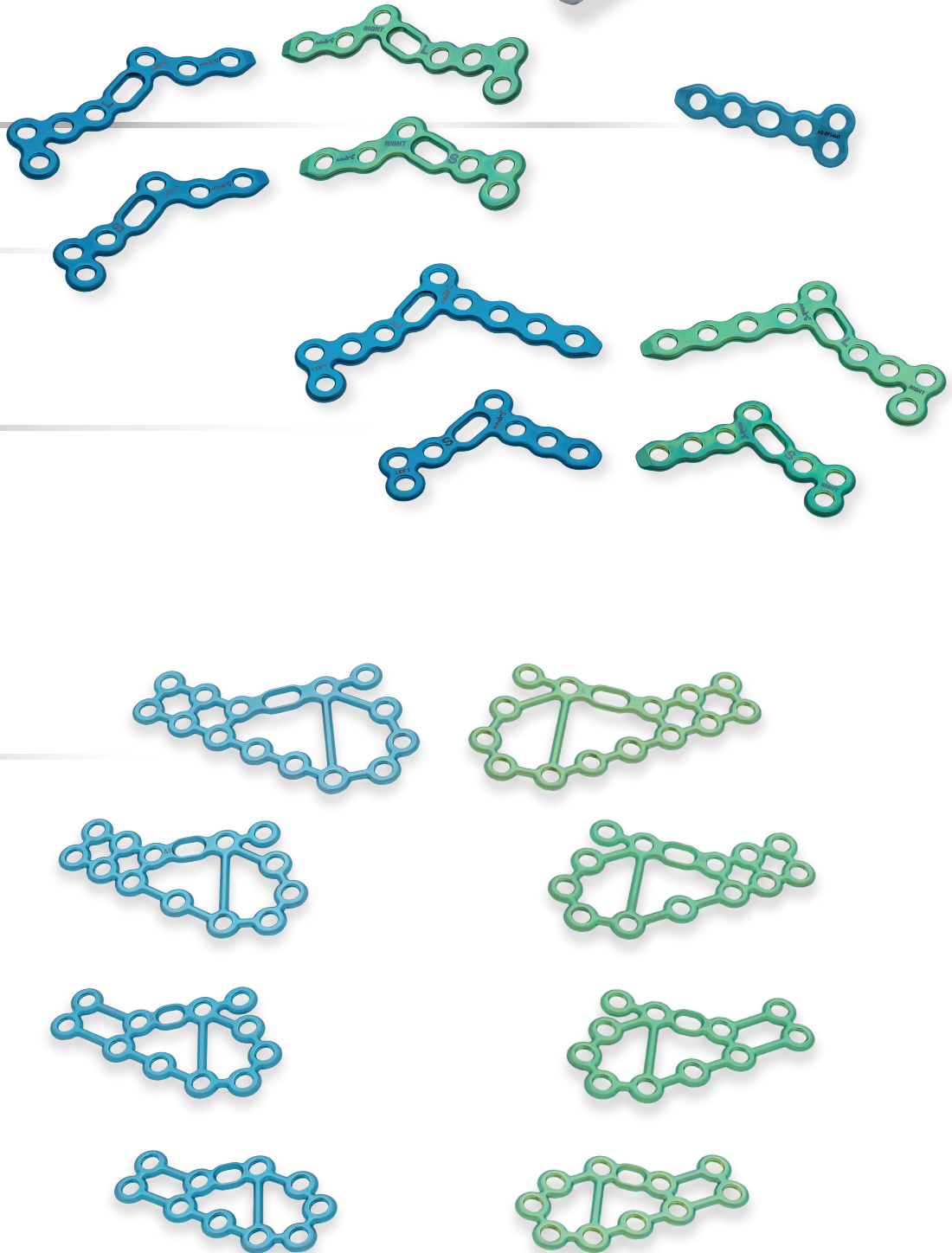
*Calcaneal Fracture Percutaneous Plate Guide*

*T-Plate*

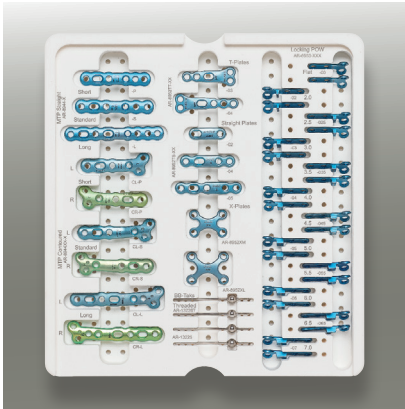
*Calcaneal Fracture Percutaneous Plates Anterior Process (right and left)*

*Calcaneal Fracture Percutaneous Plates Anterior Process/Posterior Tuberosity, (right and left)*

*Calcaneal Fracture Perimeter Plates (right and left)*



## CFS Caddies – 2.4 mm – 3.0 mm



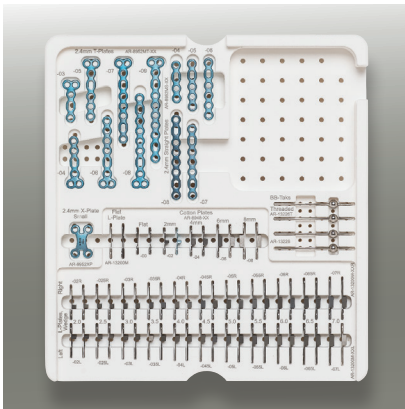
## CFS Caddies – 3.5 mm – 4.0 mm



### Plate Caddies

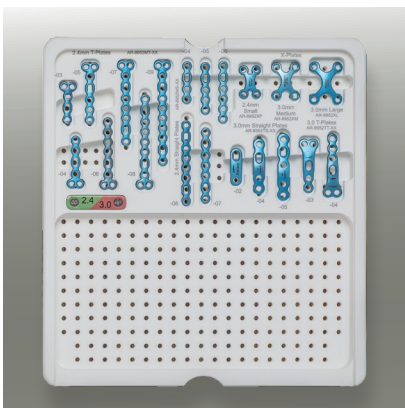
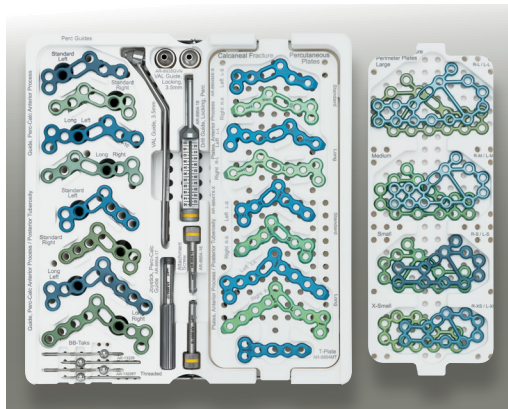
AR-8950C-06

AR-8950C-33



AR-8950C-03

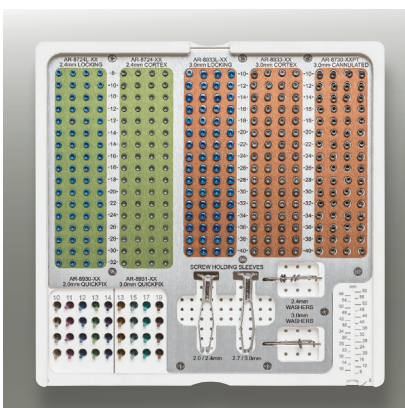
AR-8950C-34



### Screws Caddies

AR-8950C-31

AR-8950C-10



### Other Caddies

AR-8950C-04

AR-8950S-V1





The following are housed in set AR-8950S-01:

<b>2.4 mm Plates:</b>	
Low Profile Straight Plate, 2.4 mm, qty. 2 <i>4, 5, 6, 7, 8 Hole</i>	AR-8952MS-04 – 08
Low Profile T-Plate, 2.4 mm, qty. 2 <i>3, 4, 5, 6, 7, 8, 9 Hole</i>	AR-8952MT-03 – 09
Low Profile Flat Plate, qty. 2	AR-13200M
Metatarsal Opening Wedge Plate, left, qty. 2 <i>Sizes: 2, 2.5, 3, 3.5, 4, 4.5, 5, 5.5, 6, 6.5, 7 mm</i>	AR-13200M-02L – 07L
Metatarsal Opening Wedge Plate, right, qty. 2 <i>Sizes: 2, 2.5, 3, 3.5, 4, 4.5, 5, 5.5, 6, 6.5, 7 mm</i>	AR-13200M-02R – 07R
Low Profile Cotton Plate, Flat, qty. 2	AR-8948-00
Low Profile Cotton Plate, qty. 2 <i>Sizes: 2, 4, 6, 8 mm</i>	AR-8948-02 – 08
X-Plate, 2.4 mm, Small, qty. 2	AR-8952XP

<b>2.4 mm Screws:</b>	
QuickFix Screw, 2.0 mm, qty. 4 <i>Sizes: 10, 11, 12, 13, 14 mm</i>	AR-8930-10 – 14
Locking Screw, Ti, 2.4 mm, qty. 4 <i>8 – 40 mm (2 mm increments)</i>	AR-8724L-08 – 40
Cortex Screw, Ti, 2.4 mm, qty. 4 <i>8 – 40 mm (2 mm increments)</i>	AR-8724-08 – 40

<b>3.0 mm Plates:</b>	
Proximal Opening Wedge Plate, Locking, qty. 2 <i>Sizes: 00, 2, 2.5, 3, 3.5, 4, 4.5, 5, 5.5, 6, 6.5, 7 mm</i>	AR-8953-00 – 07
Low Profile T-Plate, 3.0 mm, qty. 2 <i>3, 4 Hole</i>	AR-8952TF-03, 04
Low Profile Straight Plate, 3.0 mm, qty. 2 <i>2, 4, 5 Hole</i>	AR-8952TS-02 – 05
X-Plate, 3.0 mm, Medium and Large, qty. 2	AR-8952XM, XL
MTP Plate, Straight, qty. 2 <i>Short, Standard, Long</i>	AR-8944-P, S, L
MTP Plate, contoured, left, qty. 2 <i>Short, Standard, Long</i>	AR-8944CL-P, S, L
MTP Plate, contoured, right, qty. 2 <i>Short, Standard, Long</i>	AR-8944CR-P, S, L

<b>3.0 mm Screws:</b>	
Locking Screw, Ti, 3.0 mm, qty. 4 <i>10 – 40 mm (2 mm increments)</i>	AR-8933L-10 – 40
LPS Screw, Ti, 3.0 mm, qty. 4 <i>10 – 40 mm (2 mm increments)</i>	AR-8933-10 – 40
LPS Screw, Ti, cannulated, Short Thd, 3.0 mm, qty. 4 <i>10 – 40 mm (2 mm increments)</i>	AR-8730-10PT – 40PT
QuickFix Screw, 3.0 mm, qty. 4 <i>Sizes: 13, 15, 17, 19 mm</i>	AR-8931-13 – 19

<b>2.4 mm Instrumentation (included in AR-8950S-01):</b>	
Drill Guide, 1.7/2.5 mm	AR-8916-05
Drill/Depth Guide, Locking, 2.4 mm, qty. 2	AR-8950-04
Drill Bit, 1.3 mm	AR-8930D-13
Drill Bit, 1.7 mm, qty. 2	AR-8916-14
Drill Bit, 2.4 mm	AR-4160-24
Countersink, 2.4 mm	AR-8950-01
Driver Shaft, T8 Hexalobe	AR-8916-11
Depth Guide, mini	AR-13120G-2
Screw Driver Shaft, 2.0 mm	AR-8930D
QuickFix Screw Cutter, 2.0 mm	AR-8930R
Holding Sleeve for 2.0 and 2.4 mm Screws	AR-8920H
Locking Bending Guide, 2.4 mm, qty. 2	AR-8950-08
CFS Case, 2.4/3.0 mm	AR-8950C-01

<b>2.4 mm Disposables (to be used with AR-8950S-01):</b>	
Guidewire w/Trocar Tip, .045" (1.1 mm), graduated, qty. 6	AR-8737-04
Guidewire w/Trocar Tip, threaded, .045" (1.1 mm), graduated, qty. 6	AR-8737-05
BB-Tak, qty. 2	AR-13226
BB-Tak, threaded, qty. 2	AR-13226T
Washer, 6.0 mm (for 2.0/2.4 mm screws), qty. 4	AR-8724W

<b>MTP Instrumentation (included in AR-8950S-01):</b>	
Circular Reamers <i>Sizes: 16, 18, 20, 22 mm</i>	AR-8944MC-16 – 22
Metatarsal Reamers <i>Sizes: 14, 16, 18, 20, 22 mm</i>	AR-8944MR-14 – 22
Phalangeal Reamers <i>Sizes: 14, 16, 18, 20, 22 mm</i>	AR-8944PR-14 – 22

<b>3.0 mm Instrumentation (included in AR-8950S-01):</b>	
Drill Guide, 3.0/2.0 mm	AR-8943-31
Locking Guide, 3.0 mm, qty. 2	AR-8950-07
Drill Bit, 2.0 mm, qty. 2	AR-8944-22
Drill Bit, 3.0 mm	AR-8950-05
Countersink, 3.0 mm	AR-8950-02
Driver Shaft, T10 Hexalobe	AR-8944DH
Holding Sleeve	AR-8933H
Depth Device	AR-4166
Drill Guide, 1.1 / 2.0 mm	AR-8933G
Locking Bending Guide, 3.0 mm, qty. 2	AR-8950-09
Countersink, cannulated, 3.0 mm	AR-8737-24
Depth Device, cannulated, 2.0 mm	AR-8737-08
Drill Bit, cannulated, 2.0 mm	AR-8933-20C
Driver Shaft, T10 Hexalobe, cannulated, qty. 2	AR-8737-16
Driver Shaft for 3.0 mm QuickFix Screws	AR-8931D
Cutting Sleeve for 3.0 mm QuickFix Screws	AR-8931R
Depth Device, QuickFix Screws	AR-8930G
Holding Sleeve	AR-8933H
CFS Case 2.4/3.0 mm	AR-8950C-01

<b>3.0 mm Disposables (to be used with AR-8950S-01):</b>	
Guidewire w/Trocar Tip, .045" (1.1 mm), graduated, qty. 6	AR-8737-04
Guidewire w/Trocar Tip, threaded, .045" (1.1 mm), graduated, qty. 6	AR-8737-05
Guidewire w/Double Trocar Tip, .045" (1.1 mm), graduated, qty. 6	AR-8950-06
Guidewire w/Trocar Tip, .062" (1.6 mm), qty. 6	AR-8941K
BB-Tak, qty. 2	AR-13226
BB-Tak, threaded, qty. 2	AR-13226T
Washer, Ti, 6.5 mm, qty. 4	AR-8730W

<b>2.4/3.0 mm Accessories (included in AR-8950S-01):</b>	
Plate Caddy (T, L- and X-plates, Cotton, Straight), 2.4 mm	AR-8950C-03
Screw Caddy, 2.4/3.0 mm	AR-8950C-04
Instrument Caddy, 2.4 mm	AR-8950C-05
Plate Caddy (MTP Straight/Contoured, Straight, X-Plates, Locking POW), 3.0 mm	AR-8950C-06
Instrument Caddy, 3.0 mm	AR-8950C-07
CFS Lid	AR-8950C-15
Caddy Lid	AR-8950C-16
Screw Caddy Lid	AR-8950C-21
MTP Reamer Caddy	AR-8944C-RC
Modular Frame	AR-8950C-13
Instrument Case Base	AR-8950C-23

The following are housed in set AR-8950S-V1:

<b>2.4 and 3.0 mm Screws:</b>	
VAL Screw, Ti, 2.4 mm, qty. 4 <i>8 – 40 mm (2 mm increments)</i>	AR-8724V-08 – 40*
VAL Screw, Ti, 3.0 mm, qty. 4 <i>10 – 40 mm (2 mm increments)</i>	AR-8933V-10 – 40

<b>Accessories:</b>	
Drill Guide, VAL, 2.4 mm	AR-8724GV
Drill Guide, VAL, 3.0 mm	AR-8933GV
Drill Guide, VAL, Locking, 2.4 mm, qty. 4	AR-8724GVN
Drill Guide, VAL, Locking, 3.0 mm, qty. 4	AR-8933GVN
Screw Caddy, VAL, 2.4/3.0 mm	AR-8950C-V1
Variable Angle Screw Set	AR-8950S-V1
<i>*Sizes 8 – 16 mm have room for a quantity of eight.</i>	

The following are housed in set AR-8950S-03 (2.4/3.0 mm Met Fx/Midfoot Arthrodesis Set):

<b>2.4/3.0 mm Plates:</b>	
Low Profile Straight Plate, 2.4 mm <i>4, 5, 6, 7 Hole</i>	AR-8952MS-04 – 08
Low Profile T-Plate, 2.4 mm, qty. 2 <i>3, 4, 5, 6, 7, 8, 9 Hole</i>	AR-8952MT-03 – 09
Low Profile T-Plate, 3.0 mm <i>3 and 4 Hole</i>	AR-8952TF-03 and 04
Low Profile Straight Plate, 3.0 mm <i>2, 4, 5 Hole</i>	AR-8952TS-02, 04, 05
X-Plate, 2.4 mm, qty. 2 <i>Small, Medium, Large</i>	AR-8952XP, XM, XL

<b>2/2.4/3.0 mm Screws:</b>	
Locking Screw, Ti, 2.4 mm <i>8 – 40 mm (2 mm increments)</i> <i>Sizes: 10, 12, 14, 16*</i>	AR-8724L-08 – 40
Cortex Screw, Ti, 2.4 mm <i>8 – 40 mm (2 mm increments)</i> <i>Sizes: 10, 12, 14, 16*</i>	AR-8724-08 – 40
Locking Screw, Ti, 3.0 mm <i>10 – 40 mm (2 mm increments)</i>	AR-8933L-10 – 40
LPS Screw, Ti, 3.0 mm <i>10 – 40 mm (2 mm increments)</i>	AR-8933-10 – 40
LPS Screw, cannulated, Short Thd, Ti, 3.0 mm <i>10 – 40 mm (2 mm increments)</i>	AR-8730-10PT – 40PT
QuickFix Screw, 2.0 mm <i>10 – 14 mm (1 mm increments)</i>	AR-8930-10 – 14
QuickFix Screw, 3.0 mm <i>13 – 19 mm (2 mm increments)</i>	AR-8931-13 – 19
<i>*for these sizes, caddy provides space for eight</i>	

<b>2.4 mm Instruments (included in AR-8950S-03):</b>	
Drill Guide, 1.7/2.5 mm	AR-8916-05
Drill/Depth Guide, Locking, 2.4 mm, qty. 2	AR-8950-04
Drill Bit, 1.7 mm, qty. 2	AR-8916-14
Drill Bit, 2.4 mm	AR-4160-24
Countersink, 2.4 mm	AR-8950-01
Driver Shaft, T8 Hexalobe	AR-8916-11
Depth Device	AR-13120G-2
Screw Driver Shaft, 2.0 mm	AR-8930D
Drill Bit, 1.3 mm	AR-8930D-13
QuickFix 2.0 mm Cutter	AR-8930R
Holding Sleeve for 2.0 and 2.4 mm Screws	AR-8920H
Locking Bending Guide, 2.4 mm, qty. 2	AR-8950-08

<b>2.4 mm Disposables (to be used with AR-8950S-03):</b>	
Guidewire w/Trocar Tip, .045" (1.1 mm), graduated, qty. 3	AR-8737-04
Guidewire w/Trocar Tip, .045" (1.1 mm), threaded, w/Laser line, qty. 3	AR-8737-05
Washer, 6.0 mm (for 2.0/2.4 mm screws), qty. 4	AR-8724W
Washer, 6.5 mm (for 3.0 mm screws), qty. 4	AR-8730W



All instrumentation and accessories for both 2.4/3.0 mm (AR-8950S-01) and 3.5/4.0 mm sets (AR-8950S-02) are included in the master set AR-8950S. All sets may be ordered individually. All plates, screws and disposables necessary for procedures are ordered separately.

Continued

BB-Tak, qty. 2 AR-13226  
BB-Tak, threaded, qty. 2 AR-13226T

3.0 mm Instruments (included in AR-8950S-03):

Drill Guide, 3.0/2.0 mm AR-8943-31  
Locking Drill Guide, 3.0 mm, qty. 2 AR-8950-07  
Drill Bit, 2.0 mm, qty. 2 AR-8944-22  
Drill Bit, 3.0 mm AR-8950-05  
Countersink, 3.0 mm AR-8950-02  
Driver Shaft, T10 Hexalobe AR-8944DH  
Locking Bending Guide, 3.0 mm, qty. 2 AR-8950-09  
Depth Device AR-4166  
Drill Guide, 1.1/2.0 mm AR-8933G  
Countersink, 3.0 mm, cannulated AR-8737-24  
Depth Device, 3.0 mm, cannulated AR-8737-08  
Cannulated Drill Bit, 2.0 mm AR-8933-20C  
Driver Shaft, T10 Hexalobe, cannulated, qty. 2 AR-8737-16  
Driver Shaft for QuickFix Screws, 3.0 mm AR-8931D  
Cutting Sleeve for QuickFix Screws, 3.0 mm AR-8931R  
Depth Device, QuickFix Screws (63" long) AR-8930G  
Holding Sleeve for 2.7 and 3.0 mm Screws AR-8933H

3.0 mm Disposables (to be used with AR-8950S-03):

Guidewire w/Trocar Tip, .045" (1.1 mm), graduated, qty. 3 AR-8737-04  
Guidewire w/Trocar Tip, .045" (1.1 mm), threaded, w/laser line, qty. 3 AR-8737-05  
Guidewire w/Double Trocar Tip, .045" (1.1 mm), graduated, qty. 6 AR-8950-06  
BB-Tak, qty. 2 AR-13226  
BB-Tak, threaded, qty. 2 AR-13226T

Accessories (included in AR-8950S-03):

Tray, Met Fx/Midfoot Arthrodesis, 2.4/3.0 mm AR-8950C-26  
Tray Base, Met Fx/Midfoot Arthrodesis, 2.4/3.0 mm AR-8950C-29  
Plate Caddy (Metatarsal T-Plates/Straight, TMT T-Plates/Straight, X-Plates), 2.4/3.0 mm AR-8950C-31  
CFS standard Master Case Lid (used in all trays) AR-8950C-15  
CFS Caddy Lid, 2.4/3.0 mm AR-8950C-16  
Instrument Caddy, 2.4 mm AR-8950C-05  
Instrument Caddy, 3.0 mm AR-8950C-07  
Screw Caddy, 2.4/3.0 mm AR-8950C-04

The following are housed in set AR-8950S-02:

3.5/4.0 mm Midfoot Plates:

Medial Column Plate, 3.5 mm, left, qty. 2 AR-8952MC-SL, ML, LL  
*Small, Medium, Large*  
Medial Column Plate, 3.5 mm, right, qty. 2 AR-8952MC-SR, MR, LR  
*Small, Medium, Large*  
H-Plate, right, qty. 2 AR-8942R-S, M, L  
*Small, Medium, Large*  
H-Plate, left, qty. 2 AR-8942L-S, M, L  
*Small, Medium, Large*  
H-Plate, Wedge, left, qty. 2 AR-8942L-06, 08, 10  
*Sizes: 6, 8, 10 mm*  
H-Plate, Wedge, right, qty. 2 AR-8942R-06, 08, 10  
*Sizes: 6, 8, 10 mm*  
Lapidus Plate, qty. 2 AR-8941  
Lapidus Plate, Long, qty. 2 AR-8941L  
Lisfranc Plate, left, qty. 2 AR-8951SL, ML, LL  
*Small, Medium, Large*  
Lisfranc Plate, right, qty. 2 AR-8951SR, MR, LR  
*Small, Medium, Large*

Perimeter Plates

Calcaneal Fracture Perimeter Plate, left, X-small, Small, Medium, Large AR-8954PL-XS, S, M, L  
Calcaneal Fracture Perimeter Plate, Right X-small, Small, Medium, Large AR-8954PR-XS, S, M, L

Calcaneal Fracture Percutaneous Plates:

Anterior Process/Posterior Tuberosity, left, standard, long AR-8954YL-S, YL-L  
Anterior Process/Posterior Tuberosity, right, standard, long AR-8954YR-S, YR-L  
Anterior Process, left, standard, long AR-8954ML-S, ML-L  
Anterior Process, right, standard, long AR-8954MR-S, MR-L  
Low Profile T-Plate, 3.5 mm, 4 Hole AR-8954MT

3.5/4.0 mm Screws:

Locking Screw, Ti, 3.5 mm, qty. 4 AR-8935L-14 – 60  
*14 – 60 mm (2 mm increments)*  
Cortical LPS Screw, Ti, 3.5 mm, qty. 4 AR-8935-14 – 60  
*14 – 60 mm (2 mm increments)*  
Cancellous LPS Screw, Ti, 4.0 mm, qty. 4 AR-8940-14 – 60  
*14 – 60 mm (2 mm increments)*  
LPS Screw, Ti, cannulated, Short Thd, 4.0 mm, qty. 4 AR-8740-14PTS – 60PTS  
*14 – 60 mm (2 mm increments)*

3.5/4.0 mm Instrumentation (included in AR-8950S-02):

Drill Bit, 2.5 mm, qty. 2 AR-8943-42  
Drill Bit, cannulated, 2.5 mm, qty. 2 AR-8737-09  
Drill Bit, 3.5 mm AR-4160-35  
Drill Bit, 4.0 mm AR-4160-40  
Countersink, 3.5/4.0 mm AR-8950-03  
Driver, T15 Hexalobe AR-8941DH  
Variable Angle Guide, 3.5 mm AR-8935GV  
Depth Device AR-8943-15  
Drill Guide, 2.6/1.35 mm AR-8943-03  
Drill Guide, Locking, 3.5 mm, qty. 2 AR-8943-43  
Drill Guide, 3.5/4.0 mm AR-8935G  
Locking Bending Guide, 3.5 mm, qty. 2 AR-8954-07  
Depth Guide, cannulated, 4.0 mm AR-8737-10  
Countersink, cannulated, 4.0 mm AR-8943-05  
Driver Shaft, cannulated, T15 Hexalobe AR-8943-12  
Holding Sleeve for 2.7, 3.5 and 4.0 mm Screws AR-8943-11  
CFS Case 3.5/4.0 mm AR-8950C-02

Calcaneal Fracture Specific Instruments Module (AR-8950S-04) includes:

Schanz Pin, 5.0 mm, self-drilling, 150 mm AR-8954-01  
Schanz Pin Handle, Tri-Flat Keyless Chuck, cannulated AR-8954-02  
Plate Cutter, Hercules style AR-8954-03  
Sayre Elevator AR-8954-05  
Key Elevator, 3/8" wide AR-8954-06  
VAL Guide, 3.5 mm AR-8935GV  
VAL Guide, Locking, 3.5 mm AR-8935GVN  
CFS – Calcaneal Fracture Tray Insert AR-8950C-32

Calcaneal Percutaneous Plate Guides and Drill Guides (AR-8950S-05) includes:

Guide, Perc-Calc Ant Process Calcaneal Plate, left, standard, long AR-8954-08, 10  
Guide, Perc-Calc Ant Process Calcaneal Plate, right, standard, long AR-8954-09, 11  
Guide, Perc-Calc Anterior Process/Posterior Tuberosity Calcaneal Plate, left, standard, long AR-8954-12, 14  
Guide, Perc-Calc Anterior Process/Posterior Tuberosity Calcaneal Plate, right, standard, long AR-8954-13, 15  
Attachment Screw, Perc-Calc Guide AR-8954-16  
Joystick, Perc-Calc Guide AR-8954-17  
Drill Guide, Locking, Perc AR-8954-18  
Depth Device, nonlocking AR-8954-19

3.5/4.0 mm Disposables (to be used with AR-8950S-02):

Guidewire w/Trocar Tip, .053" (1.35 mm), graduated, qty. 6 AR-8737-01  
Guidewire w/Trocar Tip, threaded, .053" (1.35 mm), qty. 6 AR-8737-02  
BB-Tak, qty. 2 AR-13226  
BB-Tak, threaded, qty. 2 AR-13226T  
Washer, Ti, 7.0 mm, qty. 4 AR-8740W  
Schanz Pin, 5.0 mm AR-8954-01

3.5/4.0 mm Accessories (included in AR-8950S-02):

Plate Caddy (H, Lapidus, Lisfranc, Medial Column), 3.5/4.0 mm AR-8950C-33  
Medial Column Caddy, 3.5/4.0 mm AR-8950C-09  
Plate Caddy, (Calcaneal), 3.5/4.0 mm AR-8950C-34  
Screw Caddy, 3.5/4.0 mm AR-8950C-10  
Screw Caddy Lid AR-8950C-22  
Instrument Caddy, 3.5/4.0 mm AR-8950C-11  
Modular Frame AR-8950C-13  
CFS Lid AR-8950C-15  
Instrument Case Base AR-8950C-24  
Caddy Lid AR-8950C-16

The following are housed in set AR-8950S-CM:

Common Instrumentation (included in AR-8950S-CM):

Utilized for both sets AR-8950S-01 and AR-8950S-02, not included in AR-8950S

Lobster Claw AR-8943-23  
Periosteal Elevator, Curved Blade, 6 mm AR-8943-20  
Bone Reduction Forceps with Teeth AR-4160FT  
Bending Pliers, qty. 2 AR-8941BP  
Freer Elevator AR-8943-19  
Cup Curette, Straight Shaft, 100 mm Long AR-8661  
McGlamry Metatarsal Elevator, 13 mm AR-8944M  
Mini Joint Distractor AR-8950JD  
Metatarsal Opening Wedge Trial AR-13200MT  
Osteotome, Short, 5, 10, 12 mm AR-1320305, 10, 12  
Osteotomy Distractor AR-13225  
Ratcheting Screwdriver Handle, AO, Mini AR-8737RH  
Sharp Hook AR-8943-21  
Hohmann Retractor, 8 mm AR-13210  
Hohmann Retractor, 15 mm AR-8943-22

Common Instrument Disposables (housed in AR-8950S-CM):

Guidewire w/Trocar Tip, .062" (1.6 mm), qty. 3 AR-8941K  
Guidewire w/Trocar Tip, threaded, .062" (1.6 mm), qty. 3 AR-8941KT  
Guidewire w/Trocar Tip, nonthreaded, .094" (2.4 mm) x 8", qty. 4 AR-8967K  
Traction Screw, Mini Joint Distractor, 16 mm, qty. 4 AR-8950JD-1  
Traction Screw, Mini Joint Distractor, 20 mm, qty. 4 AR-8950JD-2

Common Instrument Accessories (included in AR-8950S-CM):

CFS Lid AR-8950C-15  
CFS Instrument Tray Insert AR-8950C-14  
CFS Instrument Base AR-8950C-27







## Comprehensive Foot System



View U.S. Patent information at [www.arthrex.com/corporate/virtual-patent-marking](http://www.arthrex.com/corporate/virtual-patent-marking)

©2015, Arthrex Inc. All rights reserved. LB1-0437-EN\_D