

Arthroscopy Limb Positioners

for Hip, Knee, Distal Extremities, and Shoulder





Hip Distraction

Hip Distraction System (HDS) (AR-6529S)

The lightweight yet rigid hip distraction and positioning system attaches to all major OR beds via Clark rail adapters and is simple and straightforward for one person to assemble in seven easy steps. Both leg spars provide precisely controlled lower extremity positioning and traction over the unique perineal post system to facilitate pelvic balancing and safe distraction during open and arthroscopic hip procedures.

The novel traction boots provide multidirectional stability of the calf, foot, and ankle under traction to prevent heel lift and can be detached and controlled during the procedure to check hip range of motion after osteoplasty and soft-tissue reattachment and reconstruction procedures. All of the components of the HDS disassemble and store neatly and securely on a rolling storage cart.



Postless Hip Arthroscopy Disposables Kit (AR-6529-22)

Postless hip arthroscopy has been shown to reduce the risk of groin-related complications such as genital lacerations and perineal numbness due to pudendal nerve neuropraxia^{1,2} and can be performed using the HDS with a postless hip arthroscopy pad.

Specifically designed and validated for the HDS, the postless hip arthroscopy pad provides additional positioning support without the use of a perineal post during supine hip arthroscopy procedures.

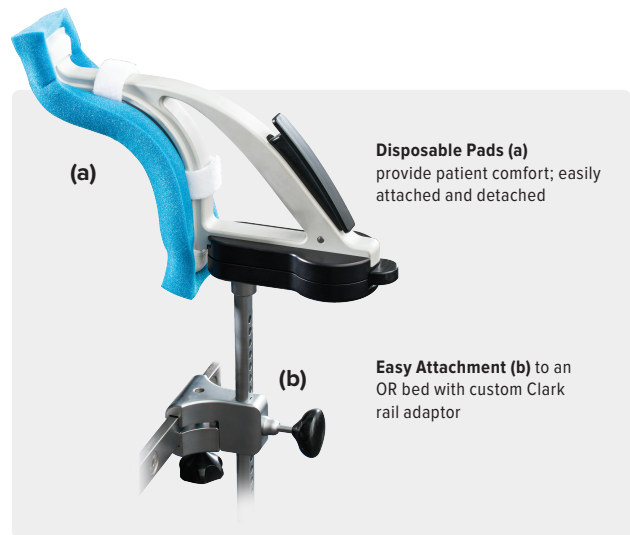
- › Three reinforced straps attach the pad to the OR bed and HDS for efficient setup
- › Arc laser marking indicates where the perineal post and pad line up if needed
- › Kit includes draw sheet for patient mobility and 2 foam pads for the patient's feet
- › Specifically contoured for the HDS patient platform



Knee Positioning

PivotPost (AR-1560)

The PivotPost is a lateral post that moves in three planes, making it easy to place it in the proper position in relation to the patient and pivot out of the way when not in use. The unique over-the-top sweeping design prevents the patient's leg from moving over the post when valgus stress or a figure-4 position is applied. The ergonomic, oversized buttons are located under the drape. Disposable pads for patient comfort are easily applied and removed. The PivotPost attaches simply to an OR bed with its custom Clark rail adaptor.

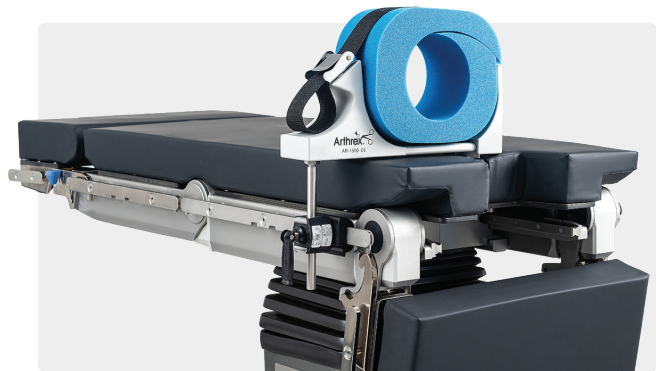
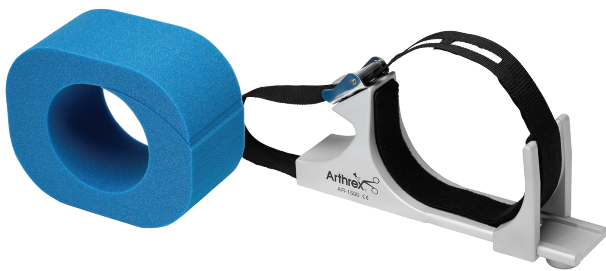


Low-Profile Leg Holder (AR-1500)

Designed with an internal hook-and-loop fastener lining to accommodate a pressure tourniquet or foam insert, the low-profile leg holder provides secure control of the thigh during varus/valgus manipulation or internal/external lower leg rotation.

Incorporating the tourniquet in the leg holder provides maximum exposure of the distal thigh for arthroscopic ACL reconstruction procedures.

Adjustable strap accommodates circumferential compression for multiple limb sizes. The disposable foam pad ensures sterility for every patient.



Small Joint Holders

Designed in conjunction with Champ L. Baker Jr, MD (Columbus, GA), the small joint limb holder provides a stable platform for arthroscopic or open procedures of the elbow and ankle. It mounts conveniently on surgical tables and adjusts for height, width, and rotation to maximize visualization and limb stability. The internal tourniquet option facilitates controlled visualization when conversion is made to an open procedure.

The adjustable side supports accommodate multiple limb sizes with either a disposable foam cushion or a pressure tourniquet.

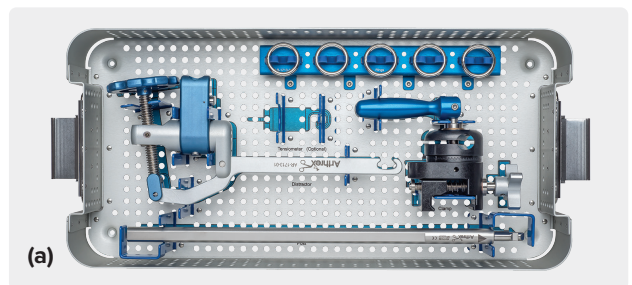


Noninvasive Ankle Distractor Set (AR-1713S) (a)

An innovative design removes the distractor mechanism away from the surgeon and allows ease of tensioning with the ergonomic tensioning wheel.

Ankle Arthroscopy Distractor Features:

- › Clark rail adapter allows ease of attachment to bed rails even over multiple drapes
- › Offset tensioning wheel allows easy control of distraction while remaining out of the surgeon's working area
- › Available with tensiometer to dial-in precise distraction for every case
- › Simple setup and fully sterilizable with case
- › Clips onto the ankle distraction strap



Ankle Distraction Strap (AR-1712)

The noninvasive ankle distraction strap is designed to cradle the foot for safe soft-tissue distraction. Made of strong nylon strapping material with soft, nonslip foam pads **(b)** for patient comfort and a secure hold, this easy-to-use, one-size-fits-all device offers effective traction and grip, a distinct advantage over current distraction devices.



Elbow, Hand, and Wrist Positioning

ElbowLOC® Arm Positioning System



The ElbowLOC arm positioning system is an upper extremity positioning device made specifically for surgery from the humerus to the hand in one self-contained sterile system. It's easy to assemble, intuitive to use, highly functional, and durable.

The system allows for supine, lateral, or supine suspended positioning for arm and elbow surgery and includes a traction tower system for wrist and hand arthroscopy and fracture work.

ElbowLOC Arm Positioning System (AR-1600S)

Clamp base	AR-1600-1
Supine positioner	AR-1600-2
Lateral positioner	AR-1600-3
Wrist support/capture	AR-1600-4
Humeral support/capture	AR-1600-5
Reducer/distractor	AR-1600-6
Wrist tower	AR-1600-7
Traction bar	AR-1600-8
Traction bar capture	AR-1600-9
Traction gauge	AR-1600-10
Distraction nut	AR-1600-11
Disposables	
Finger Traps	
Finger trap, small	AR-1616-S
Finger trap, medium	AR-1616-M
Finger trap, large	AR-1616-L
Finger trap, x-large	AR-1616-X

Sterile Field Kit

ElbowLOC sterile field kit	AR-1600-FKS
----------------------------	-------------



Lateral



Supine



Supine Suspended



Traction Tower

TRIMANO® Wrist Positioner



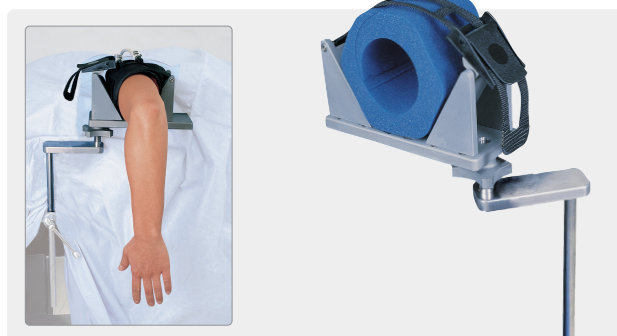
The TRIMANO wrist positioner allows the surgeon to position the hand using the TRIMANO support arm and adapter. The wrist positioner connects directly to the adapter and within the sterile field.

The wrist positioner is a radiolucent Weinberg finger fixation device intended for use during wrist arthroscopy, distal radius fracture surgery, and other open procedures.

TRIMANO wrist positioner	AR-1647
TRIMANO drape	AR-1648
TRIMANO support arm	AR-1640
TRIMANO adapter	AR-1641

TRIMANO is a registered trademark of Maquet GmbH.

Small Joint Limb Holder



The small joint limb holder provides a stable platform for arthroscopic or open procedures of the elbow. It mounts conveniently on all surgical tables and adjusts for height, width, and rotation to maximize visualization and limb stability. The internal tourniquet option facilitates controlled visualization when conversion is made to an open procedure.

Small joint limb holder	AR-1506
Foam insert for small joint holder, qty. 5	AR-1507

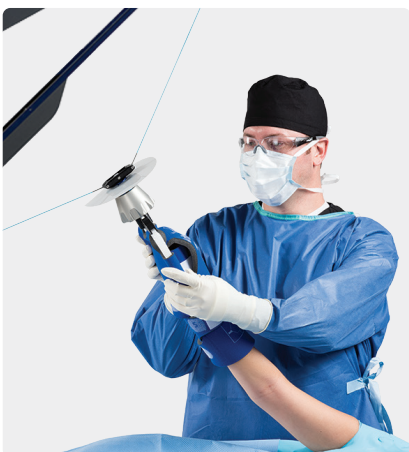
Literature

Limb positioners brochure	LB1-0202-EN
---------------------------	-------------

Shoulder Suspension System

Shoulder Suspension System (AR-1650S)

The Shoulder Suspension System for lateral decubitus positioning is designed to be simple and intuitive while providing optimal visualization during arthroscopic shoulder procedures.



Sterile control of internal/external rotation frees staff to focus on the procedure instead of manual positioning.



Intraoperative control of abduction/adduction provides ultimate management of direct positioning. The arm can easily be disconnected and reconnected to allow full range-of-motion testing.



Direct lateral joint distraction is easily applied and can be directed anterior or posterior with a safe and secure padded strap.

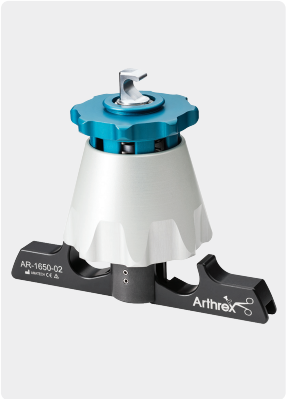
Shoulder Suspension System (Components)



Arm Sleeve



Lateral Traction Sling



Arm Sleeve Connector



Lateral Traction Sleeve Connector



Weight



US Clark Rail Clamp



Shoulder Suspension Tower



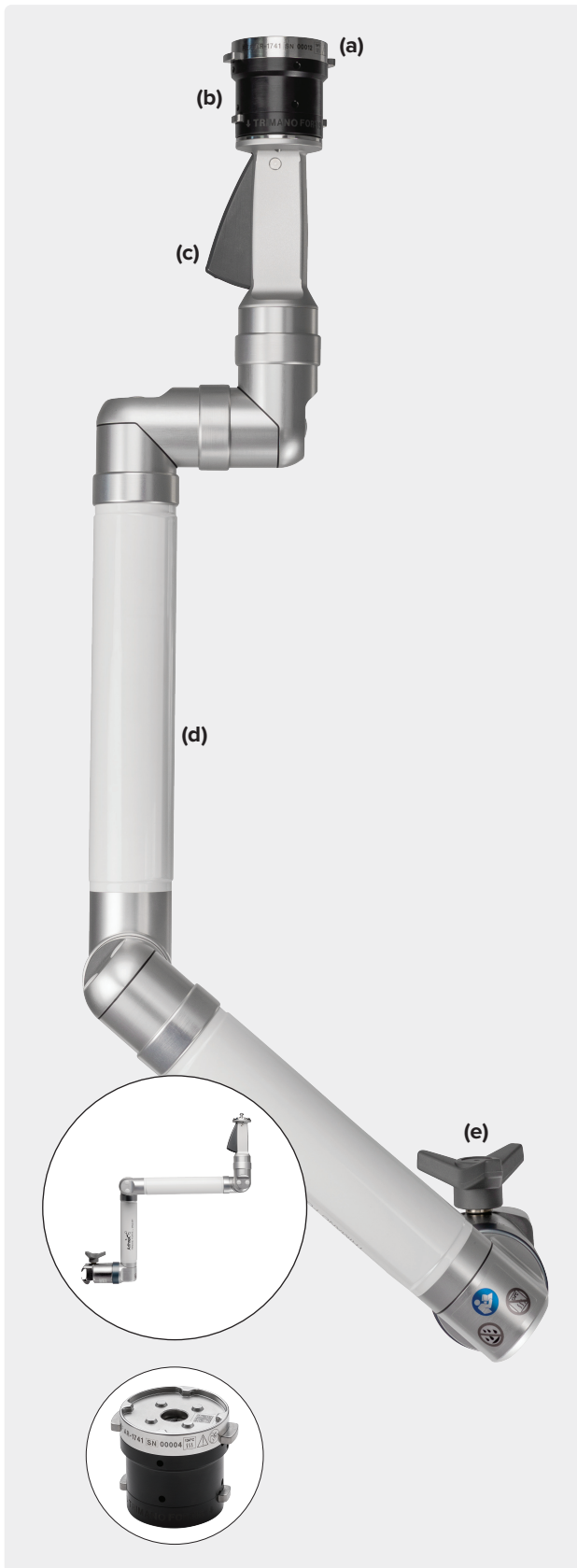
Storage Cart



Lightweight, simple to set up, and easy to fold for storage on a convenient cart with a small footprint.

TRIMANO FORTIS® Support Arm

TRIMANO FORTIS Support Arm (AR-1740)



Optimized Workflows

- › Lock and unlock the sterile limb holder during operations when needed to manipulate **(a)**
- › Surgical team's "third hand"; allows critical OR staff to focus on the procedure instead of patient positioning
- › Unrestricted access to the surgical field

Flexible Limb Positioning

- › One single sterile adapter for all applications
- › Light-touch handle for effortless adjustments **(b)**
- › Strong for precise and secure sterile positioning **(c)**

Simple to Use

- › Compact and lightweight **(d)**
- › No need for batteries, hoses, cables, or foot pedals
- › Easily attached to any OR table rail and ready for immediate use **(e)**
- › Intuitive operation; all required disposable articles are contained in convenient sterile kits



Shoulder and Elbow



Wrist



Knee



Open and
General Surgery

TRIMANO FORTIS® Support Arm (Components)



Shoulder

TRIMANO® Beach Chair Kit allows for quick and easy patient preparation while gently protecting the operative arm.



Elbow

TRIMANO Elbow Kit for arthroscopic or open elbow procedures in the lateral or prone position allows complete control of a patient's elbow.



Wrist

TRIMANO wrist positioner is a radiolucent Weinberg finger fixation device that allows for x-ray imaging and is ideal for wrist arthroscopy, distal radius fracture surgery, and other open wrist procedures.



Knee

TRIMANO FORTIS Knee Kit is ideal for holding a varus or valgus force, improving compartment visualization during knee arthroscopy, and supporting the limb during partial or total knee arthroplasty.



Open Surgery

TRIMANO Synergy camera head holder can help document open cases just like arthroscopic cases.



Accessories

TRIMANO drape is also available separately and sterile for use with reusable accessories (eg, wrist positioner and camera holder).

Lift-Assist Beach Chair Positioner System

Lift-Assist Beach Chair (AR-1627)

Easy-to-Use and Protective Head Positioning

- › Universal head positioner (UHP), single-use, simple-to-apply disposable kit **(a)**
- › Comfortable and secure **(b)**
- › Free-sliding head positioner protects the patient's neck when raising and lowering the table **(c)**

Unobstructed Posterior and Lateral Access

- › Completely removable fold-away shoulder panels **(d)**
- › Clear access to the operative shoulder **(e)**

Lightweight, With Lift-Assist

- › Quick and easy patient repositioning **(f)**
- › Lift-assist piston supports up to 80 lb (36.3 kg) of the patient's upper body weight, enabling nearly effortless positioning **(g)**
- › Class-leading 500 lb (226.8 kg) patient weight limit
- › Lateral slide feature enables the surgeon to move the patient closer to the edge of the OR table for increased surgical site access **(h)**
- › Lightweight; under 30 lb (13.6 kg) without panels **(i)**



Easy to adjust and position with lift-support pistons.



Safe and supportive. Simple adjustments can be made using the lift-support handle.



Lies flat for anesthesia access.

Lift-Assist Beach Chair (Components)



Beach Chair w/
Reusable Pad Set



Rail Clamp



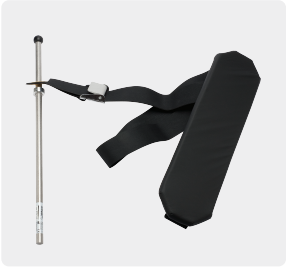
Intubation Pad and Plate



Reusable Security Strap



LPS Arm Support



Countertraction Strap



Easy Lock Socket



UHP Disposable



UHP w/ Harness



UHP w/out Harness



Reusable Pad Set



UHP Replacement Strap



Cart



Beach Chair
w/ Components

Ordering Information

Hip Distraction System (AR-6529S)

HDS patient platform	AR-6529-01
HDS patient platform pad	AR-6529-02
HDS prep table	AR-6529-03
HDS prep table pad	AR-6529-04
HDS operative leg spar, long	AR-6529-05L
HDS traction boot, qty. 2	AR-6529-23
HDS perineal post	AR-6529-07
HDS perineal post pad	AR-6529-08
HDS table clamp (US), qty. 2	AR-6529-09
HDS well leg spar, long	AR-6529-14L
HDS well leg spar adapter	AR-6529-15
Additional Components	
HDS operative spar cover	AR-6529-12
HDS storage cart	AR-6529-13
HDS stabilizer leg	AR-6529-16
HDS Traction Boot Replacement Pads Kit	AR-6529-17
HDS perineal post pad, dense	AR-6529-21
Single-Use Disposables	
HDS Disposables Kit	AR-6529-11
HDS Postless Hip Arthroscopy Disposables Kit	AR-6529-22
International Rail Clamps	
HDS table clamp (EU), qty. 2	AR-6529-10
HDS table clamp (UK), qty. 2	AR-6529-18
HDS table clamp (DEN), qty. 2	AR-6529-19
HDS table clamp (JP), qty. 2	AR-6529-20

Knee Positioners

PivotPost and clamp	AR-1560
PivotPost disposable pad, nonsterile	AR-1560-01
Low-profile leg holder	AR-1500
Foam cushion insert for leg holder, qty. 5	AR-1502
Easy-lock socket	AR-1627-12

Noninvasive Ankle Distractor Set (AR-1713S)

Distractor head	AR-1713-01
Distractor post	AR-1713-02
Bed rail clamp	AR-1713-03
Ankle distractor instrument case	AR-1713C
Optional	
Tensiometer	AR-1713-04
Ankle distraction strap, nylon (for use w/ AR-1713S)	AR-1712
Ankle distraction strap, cotton, waistband (for use w/out ankle distractor)	AR-1710
Small joint limb holder	AR-1506
Foam insert for small joint limb holder, qty. 5	AR-1507

Wrist Traction Tower (AR-1611S)

Finger distraction attachment	AR-1614
Foam insert for countertraction boom, qty. 5, single-use	AR-1615
Finger traps, small, sterile, qty. 5, single-use	AR-1616-S
Finger traps, medium, sterile, qty. 5, single-use	AR-1616-M
Finger traps, large, sterile, qty. 5, single-use	AR-1616-L
Finger traps, x-large, sterile, qty. 5, single-use	AR-1616-X
Foam hand pads, sterile, qty. 5, single-use	AR-1617
Atraumatic hand holder traction attachment	AR-1602D

Shoulder Suspension System (AR-1650S)

Shoulder Suspension System, S3 (includes tower, US Clark rail clamp, arm sleeve connector, lateral traction sleeve connector, weight hanger w/ 5 weights)

Disposables

Arm sleeve, S3 (disposable sleeve, 6 per box)	AR-1651
Lateral traction sling, S3 (disposable sling, 6 per box)	AR-1652

Recommended

Storage cart	AR-1650-06
--------------	------------

Available Separately

Shoulder suspension tower, S3	AR-1650-01
Arm sleeve connector, S3	AR-1650-02
Lateral traction sleeve connector, S3	AR-1650-03
Weight hanger, S3, 10 lb (4.5 kg)	AR-1650-04
Weight, single, S3, 2.5 lb (1.1 kg) each	AR-1650-05
US Clark rail clamp, S3	AR-1650-07

TRIMANO FORTIS® Support Arm

TRIMANO FORTIS support arm	AR-1740
TRIMANO FORTIS adapter	AR-1741
TRIMANO® beach chair kit (box of 6)	AR-1644
TRIMANO elbow kit (box of 6)	AR-1646
TRIMANO wrist positioner	AR-1647
TRIMANO drape (box of 6)	AR-1648
TRIMANO FORTIS reusable leg holder	AR-1747-B
TRIMANO FORTIS knee kit (box of 6)	AR-1747
TRIMANO Synergy camera head holder	AR-3210-0010

Products advertised in this brochure / surgical technique guide may not be available in all countries. For information on availability, please contact Arthrex Customer Service or your local Arthrex representative.

Lift-Assist Beach Chair Positioner

Included	
Lift-assist beach chair positioner (includes reusable pad set, intubation pad and plate, beach chair clamps qty. 2, reusable security strap)	AR-1627
Intubation pad and plate	AR-1627-10
Reusable security strap	AR-1627-15
Rail clamps (2 ea)	AR-1627-11
Required	
LPS arm support	AR-1627-01
Countertraction strap	AR-1627-03
Easy lock socket	AR-1627-12
UHP w/ handles	AR-1627-05
UHP w/out handles	AR-1627-20
UHP disposable (box of 10)	AR-1627-06
Recommended	
Reusable pad set	AR-1627-09
Cart	AR-1627-13
UHP replacement strap	AR-1627-17



This description of technique is provided as an educational tool and clinical aid to assist properly licensed medical professionals in the usage of specific Arthrex products. As part of this professional usage, the medical professional must use their professional judgment in making any final determinations in product usage and technique. In doing so, the medical professional should rely on their own training and experience, and should conduct a thorough review of pertinent medical literature and the product's directions for use. Postoperative management is patient-specific and dependent on the treating professional's assessment. Individual results will vary and not all patients will experience the same postoperative activity level or outcomes.



Arthrex manufacturer, authorized representative, and importer information (Arthrex eIFUs)



US patent information