

Arthrex Amnion™ Matrix

Natural Mechanical Protection



Arthrex® 

Introducing Arthrex Amnion™ Matrix

Arthrex Amnion grafts maintain the natural mechanical properties of amnion and are rich in key growth factors and cytokines. Arthrex Amnion grafts provide an anatomic barrier that aids in providing mechanical protection and support to soft tissue.

Arthrex Amnion™ Matrix

Features and Benefits

Amniotic-derived tissues contain endogenous growth factors and cytokines¹⁻⁴ that maintain the natural properties of amnion. Arthrex Amnion matrix is an anatomical barrier that helps provide mechanical protection⁵ while supporting tissue with nutrient-rich growth factors.⁶⁻⁸

About Amnion:

Amniotic membrane is a thin, semitransparent, and resilient membrane that lines the inner cavity of the placenta.

With over 100 years of clinical history,³ the functional capability of amniotic membrane is well documented.

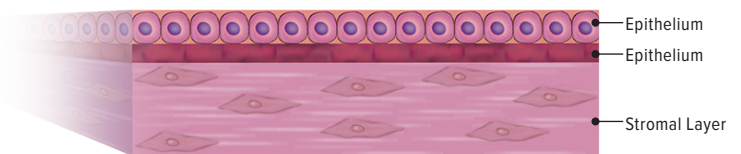
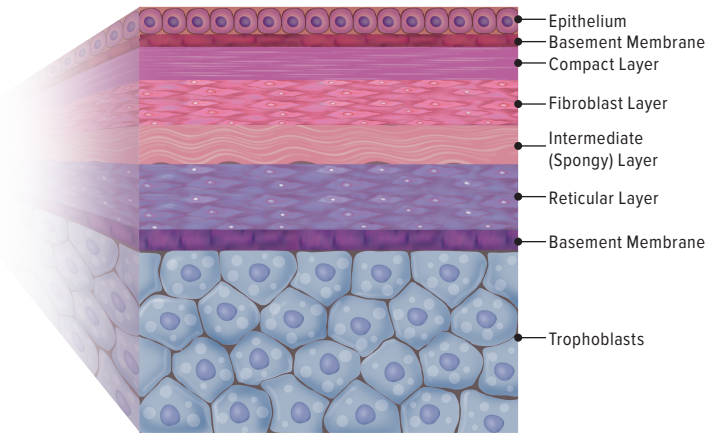
Just as amniotic tissue protects and cushions the fetus during development, Arthrex Amnion matrix helps provide the same support to damaged tissue.⁴

Arthrex Amnion matrix harnesses growth factors essential for signaling.^{4,7}

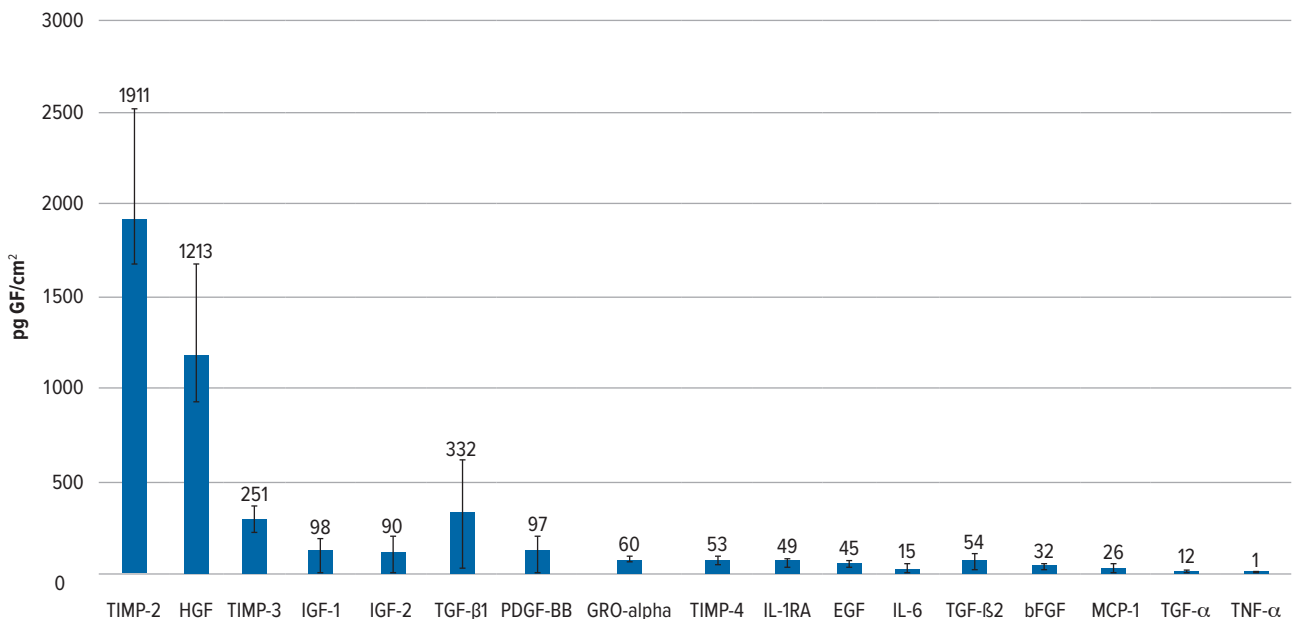
The natural properties of Arthrex Amnion matrix are preserved during processing, maintaining inherent levels of key extracellular matrix proteins, growth factors, and cytokines.^{6,9}



Amnion Membrane



Growth Factors Released From Arthrex Amnion Matrix After 24 Hours at 37°C

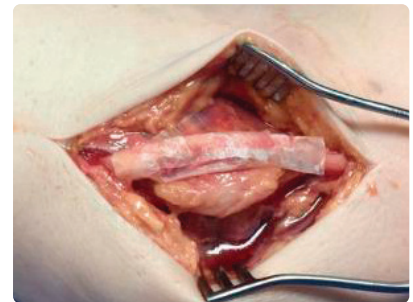
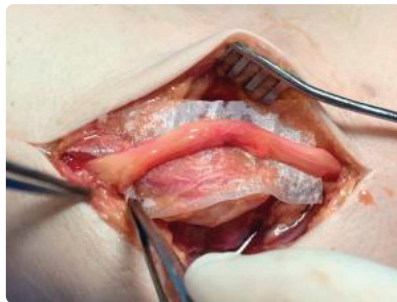
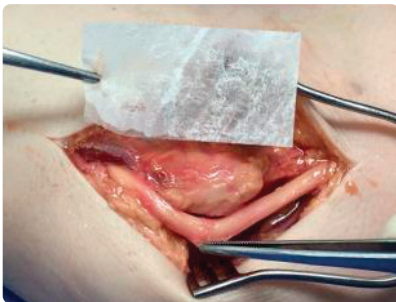


Arthrex Amnion™ Matrix

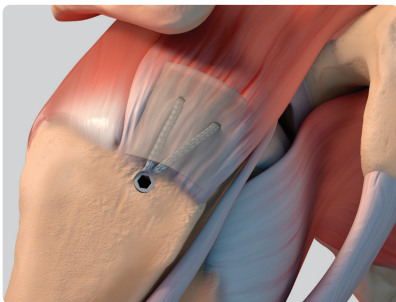
Surgical Applications

In general orthopedics, arthroplasty, hand and wrist, and foot and ankle procedures, Arthrex Amnion matrix has been used as a protective barrier to provide essential mechanical protection.^{5,10}

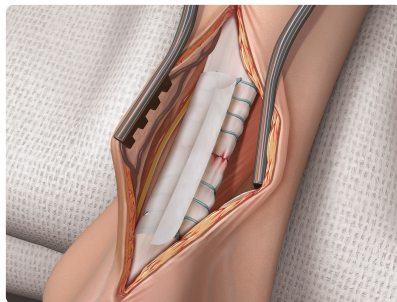
- > Shoulder
 - > Knee
 - > Achilles
 - > Wounds
- > Hand and Wrist
 - > Tendons
 - > Nerves



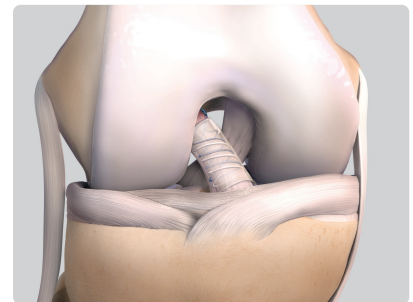
Nerve Wrap: Arthrex amnion matrix can be used as an anatomical wrap to act as a natural structural barrier.⁵



Rotator Cuff Repair



Achilles Repair



Anterior Cruciate Ligament (ACL) Repair

Growth Factors Present in Amniotic Tissue and Corresponding Function¹¹

Growth Factor and Cytokines	Abbreviation	Property/Function
Hepatocyte Growth Factor	HGF	Myogenesis, Wound Healing, Organ Regeneration
Epidermal Growth Factor	EGF	Cell Growth, Proliferation, Differentiation
Tumor Necrosis Factor- α	TNF- α	Apoptosis, Angiogenesis
Chemokine	GRO- α	Angiogenesis, Wound Healing
Monocyte Chemoattractant Protein-1	MCP-1	Immune Modulation
Tissue Inhibitor of Metalloproteinases (1,2,3,4)	TIMP (1,2,3,4)	Growth Promotion
Insulin-Like Growth Factor (1,2)	IGF (1,2)	Cell Activation, Platelet Degranulation
IL1-Receptor Antagonist	IL1-RA	Anti-inflammatory
Transforming Growth Factor (α , β 1, β 2)	TGF (α , β 1, β 2)	Proliferation, Differentiation, Immune Modulation

Arthrex Amnion™ Matrix

Arthrex Amnion matrix is Available in Two Convenient Forms

- › Arthrex Amnion thin matrix is derived from the amnion membrane layer of the placenta. This semitransparent tissue can be applied directly to the surgical site for use in a number of different soft-tissue applications.
- › Arthrex Amnion cord matrix is a thicker membrane derived from the umbilical cord. This resilient graft is thick enough to hold a stitch when hydrated.

These immune-privileged tissues are prepared with a processing methodology that is able to preserve the natural architecture of the amniotic membrane and its functional capability.⁶

Arthrex Amnion matrix is available in a variety of thin and thick membranes ideal for orthopedic applications. It is indicated for homologous use as a soft-tissue covering, barrier, or wound covering.⁷

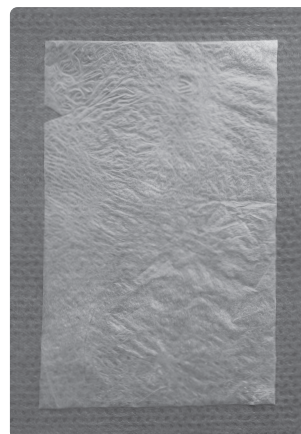
Arthrex Amnion Matrix Ordering Information

Arthrex Amnion Matrix - Thin (a)

2 cm × 2 cm	ABS-4100-022
2 cm × 3 cm	ABS-4100-023
3 cm × 3 cm	ABS-4100-033
4 cm × 4 cm	ABS-4100-044
4 cm × 6 cm	ABS-4100-046
4 cm × 8 cm	ABS-4100-048
7 cm × 7 cm	ABS-4100-077
2 cm × 12 cm	ABS-4100-212

Arthrex Amnion Matrix - Cord (b)

2 cm × 2 cm	ABS-4200-022
2 cm × 3 cm	ABS-4200-023
3 cm × 3 cm	ABS-4200-033
3 cm × 4 cm	ABS-4200-034
3 cm × 6 cm	ABS-4200-036
3 cm × 8 cm	ABS-4200-038



(a)



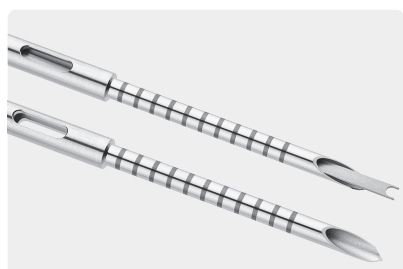
(b)

AmnionXpress™ Delivery Device

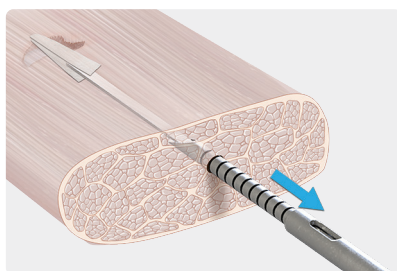
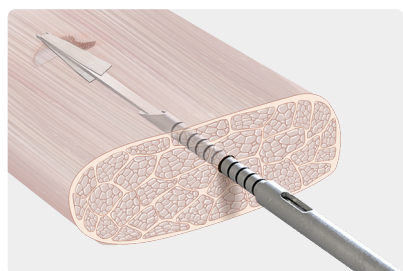
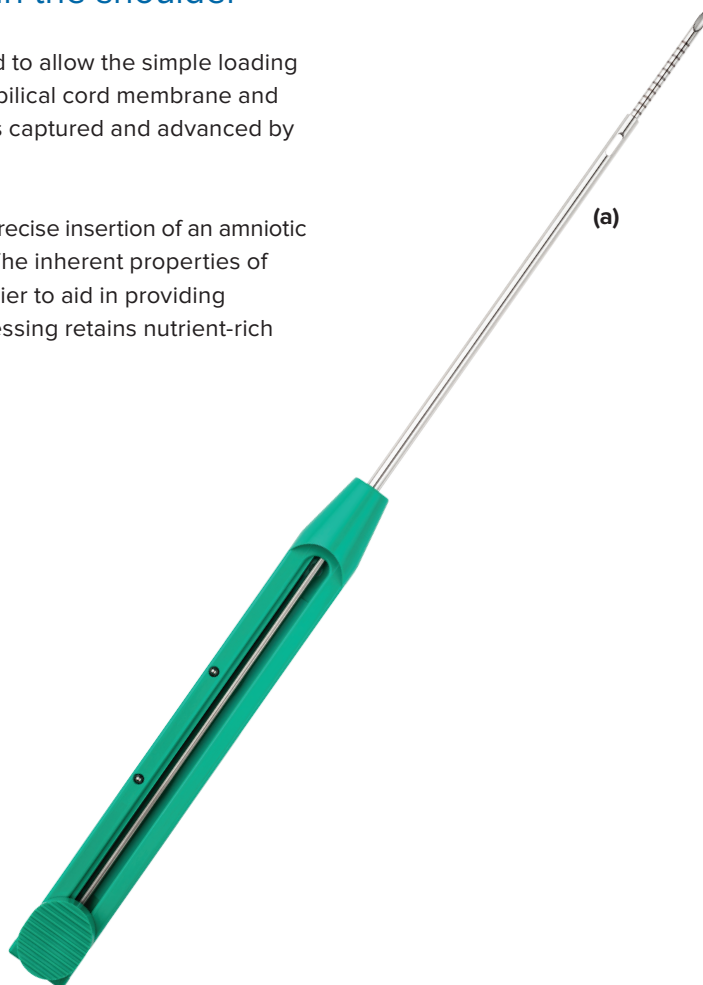
For the insertion of an Arthrex Amnion™ 5 mm × 40 mm streamer to damaged pathologic tissue in the shoulder

The AmnionXpress delivery device is designed to allow the simple loading of Arthrex Amnion matrix strips made from umbilical cord membrane and measuring 40 mm × 5 mm through a slot that is captured and advanced by a forked-tip nitinol delivery needle.

The AmnionXpress delivery device is used for precise insertion of an amniotic matrix strip directly to the pathologic tissues. The inherent properties of amniotic tissues help provide an anatomic barrier to aid in providing mechanical protection, while proprietary processing retains nutrient-rich growth factors essential for signaling.^{1,12}



AmnionXpress device prior to loading, and then with the forked-tip nitinol needle fully deployed.



Arthrex AmnionXpress Ordering Information

AmnionXpress delivery device (a)	ABS-4400
Amnion matrix, cord membrane, 5 mm × 40 mm	ABS-4200-054

References

1. Coolen NA, Schouten KC, Middelkoop E, Ulrich MM. Comparison between human fetal and adult skin. *Arch Dermatol Res*. 2010;302(1):47-55. doi:10.1007/s00403-009-0989-8
2. Coolen NA, Schouten KC, Boekema BK, Middelkoop E, Ulrich MM. Wound healing in a fetal, adult, and scar tissue model: a comparative study. *Wound Repair Regen*. 2010;18(3):291-301. doi:10.1111/j.1524-475X.2010.00585.x
3. Tseng SC, Espana EM, Kawakita T, et al. How does amniotic membrane work? *Ocul Surf*. 2004;2(3):177-187.
4. Riordan NH, George BA, Chandler TB, McKenna RW. Case report of non-healing surgical wound treated with dehydrated human amniotic membrane. *J Transl Med*. 2015;13:242. doi:10.1186/s12967-015-0608-8
5. Kim SS, Sohn SK, Lee KY, et al. Use of human amniotic membrane wrap in reducing perineural adhesions in a rabbit model of ulnar nerve neurotomy. *J Hand Surg Eur Vol*. 2010;35(3):214-219. doi:10.1177/1753193409352410
6. Delcroix GJ, Namin S, D'Ippolito G, Temple HT, Marshall R. Preserving the natural regenerative potential of amniotic membrane. *Vivex Biomedical*; 2015.
7. Niknejad H, Peirovi H, Jorjani M, et al. Properties of the amniotic membrane for potential use in tissue engineering. *Eur Cell Mater*. 2008;15:88-89.
8. Koob TJ, Lim JJ, Masee M, Zabek N, Denozière G. Properties of dehydrated human amnion/chorion composite grafts: implications for wound repair and soft tissue regeneration. *J Biomed Mater Res B Appl Biomater*. 2014;102(6):1353-1362. doi:10.1002/jbm.b.33141
9. Arthrex Amnion™ Matrix Thin and Cord [Instructions for Use (80-166 02)]. Naples, FL; Arthrex; 2016.
10. Jerabek SA, Carroll KM, Michaels B, Mayman DJ. A pilot study to evaluate the safety and efficacy of amniotic membrane transplantation in patients with arthrofibrosis following total knee arthroplasty. *Hospital for Special Surgery*. <https://www.hss.edu/research/clinical-trials/knee-amniotic-membrane-tka-arthrofibrosis-not-enrolling>. Accessed April 9, 2026.
11. Hui AY, McCarty WJ, Masuda K, Firestein GS, Sah RL. A systems biology approach to synovial joint lubrication in health, injury, and disease. *Wiley Interdisc Rev Syst Biol Med*. 2012;4(1):15-37. doi:10.1002/wsbm.157
12. Rowlatt U. Intrauterine wound healing in a 20 week human fetus. *Virchows Arch A Pathol Anat Histol*. 1979;381(3):353-361. doi:10.1007/BF00432477

This description of technique is provided as an educational tool and clinical aid to assist properly licensed medical professionals in the usage of specific Arthrex products. As part of this professional usage, the medical professional must use their professional judgment in making any final determinations in product usage and technique. In doing so, the medical professional should rely on their own training and experience and should conduct a thorough review of pertinent medical literature and the product's directions for use. Postoperative management is patient-specific and dependent on the treating professional's assessment. Individual results will vary and not all patients will experience the same postoperative activity level or outcomes.



Arthrex manufacturer, authorized representative, and importer information (Arthrex eIFUs)



US patent information