

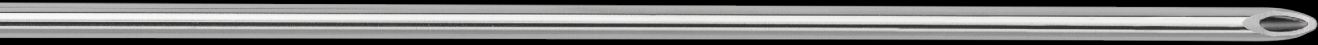
# CoolCut™ Specialty Series

Hip-Length Shaver Blades and Burrs





DiamondCut™ Hip Burr



Torpedo™ Blade



Excalibur



Convex Curved SabreTooth



Bone Cutter



Straight Round Burr



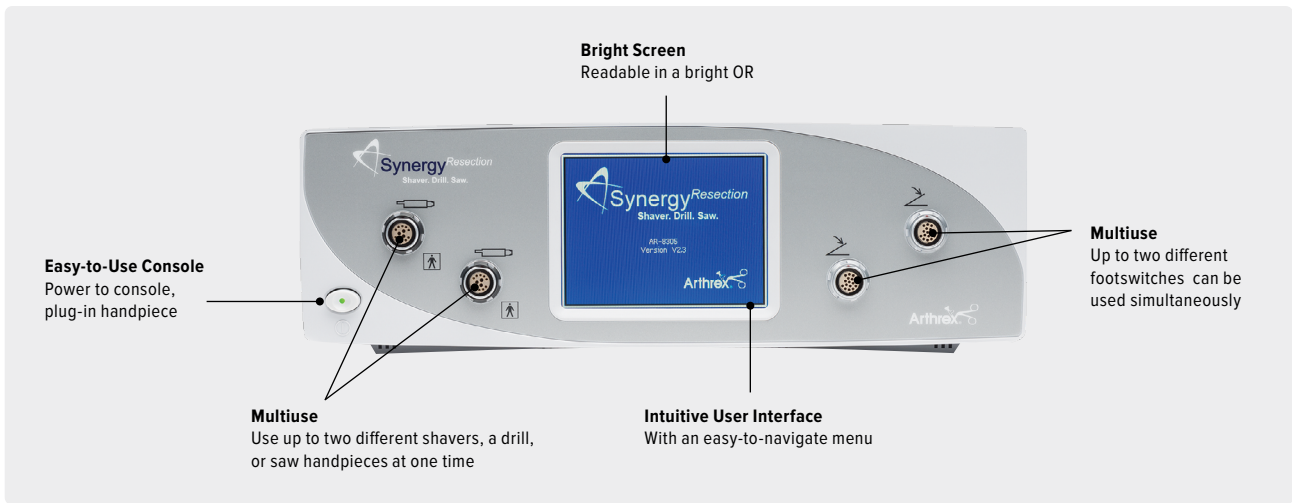
Concave Curved Round Burr



Retractable Hood Round Burr

# Synergy<sup>Resection</sup>™ System

Innovative solutions designed to meet surgeons' needs with the Synergy<sup>Resection</sup> system's complete arthroscopic tissue and bone resection portfolio.



This versatile Synergy<sup>Resection</sup> system was designed for multiple orthopedic procedures and operates like two consoles in one chassis. It can simultaneously operate two accessory handpieces completely independent of each other. Operators can also use one or two foot pedals to control each of the accessory handpieces. Shaver handpieces offer three oscillating modes depending on the application or surgeon's preference: standard, efficient, or aggressive.

Integration of the Synergy<sup>Resection</sup> console with a Synergy video management system enables the heads-up display feature and allows for easy visibility of the shaver system settings on the monitor. When the Synergy<sup>Resection</sup> console is integrated with the Arthrex DualWave™ or Continuous Wave™ 4 arthroscopy pump, the pump detects the shaver handpiece status and automatically compensates for the loss of distention by increasing the pressure while the shaver is active.

---

Synergy<sup>Resection</sup> console

AR-8305

---

# Footswitches

## Low-Profile Footswitch

- › Ergonomic design for less fatigue during use



(a)



(b)

## Multifunction/Wireless

- › Radio frequency, wireless communication without line-of-sight concerns
- › Digital on/off or analog gas pedal operation



(c)

## Multifunction/Cable

- › Digital on/off or analog gas pedal operation
- › Cabled for secure operation

## Low-Profile Footswitch

The low-profile footswitch minimizes user fatigue while maintaining control of all functions. Control direction and speed by pressing the appropriate pad.

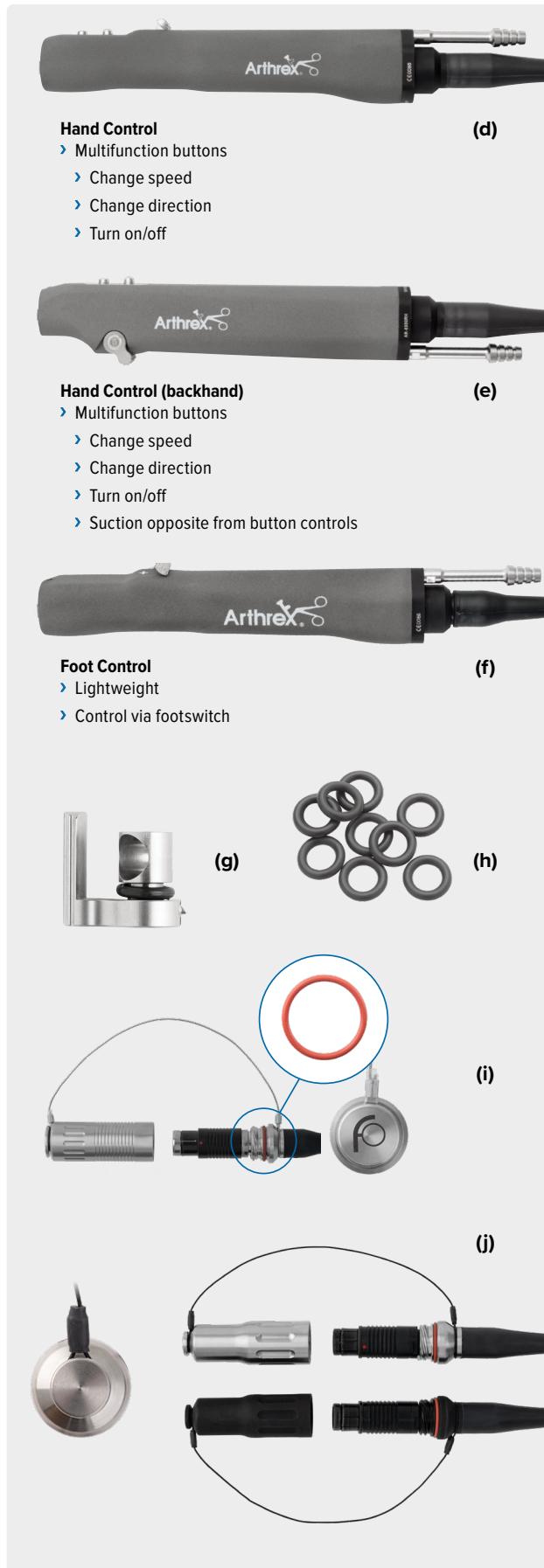
Press the toggle dome switch to change control between the console's dual channels if two handpieces are plugged in. If one handpiece is plugged in, the toggle dome switch will alternate between the three oscillation modes.

## Wireless and Coded Multifunction Footswitches

The wireless and cabled multifunction footswitches feature a user-selectable function mode of either the low-profile footswitch or the gas pedal footswitch. All speed, direction, cruise, and toggle controls are accessible on either of these user-friendly accessories, and the active mode is displayed on the console.

Low-profile footswitch (a)	AR-8310
Synergy <sup>Resection™</sup> wireless footswitch (b)	AR-8315W
Cabled gas pedal footswitch (c)	AR-8315C

# Handpieces



Arthrex’s unique double-sealed shaver handpieces are robust and reliable with a light ergonomic feel and come with or without touch-control options. These high-speed, high-torque handpieces feature a snap-lock collet that accepts standard, hip-length, and small joint blades and burrs, making it one of the most versatile handpieces available. With high-performance motors and constructed of cutting-edge materials, Synergy<sup>Resection™</sup> shaver handpieces are a great addition to the OR.

## Hand-Control Shaver Handpieces

Featuring ergonomic multifunction buttons that place control of speed and direction at your fingertips, the hand-control shaver handpieces are available in standard and backhand models.

## Foot-Control Shaver Handpiece

With the same lightweight, high-performance features as our hand-operated handpieces, the footswitch shaver handpiece provides another option for control.

Shaver handpiece, hand control (d)	AR-8332H
Shaver handpiece, hand control, backhand (e)	AR-8332RH
Shaver handpiece, footswitch control (f)	AR-8330F
Replacement valve assembly for AR-8330F, AR-8330H, AR-8330RH, and AR-8332RH handpieces (g)	AR-8330V
Replacement O-rings for AR-8330V valve assembly (pack of 10) (h)	AR-8330VO
Replacement O-rings for F-style soaker cap (pack of 5) (i)	AR-8330FO
Replacement O-rings for T-style soaker cap (pack of 5) (j)	AR-8330TO





This description of technique is provided as an educational tool and clinical aid to assist properly licensed medical professionals in the usage of specific Arthrex products. As part of this professional usage, the medical professional must use their professional judgment in making any final determinations in product usage and technique. In doing so, the medical professional should rely on their own training and experience and should conduct a thorough review of pertinent medical literature and the product's directions for use. Postoperative management is patient-specific and dependent on the treating professional's assessment. Individual results will vary and not all patients will experience the same postoperative activity level or outcomes.



Arthrex manufacturer, authorized representative, and importer information (Arthrex eIFUs)



US patent information