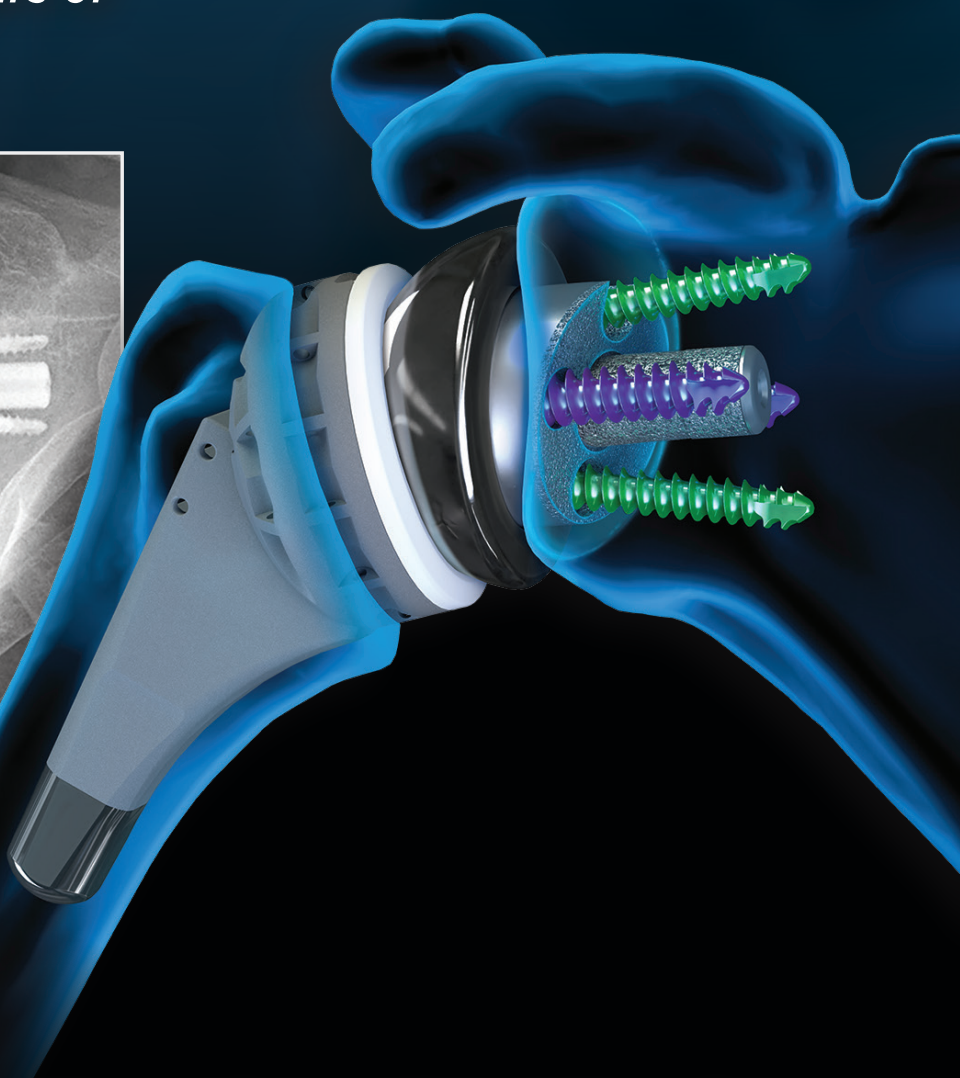
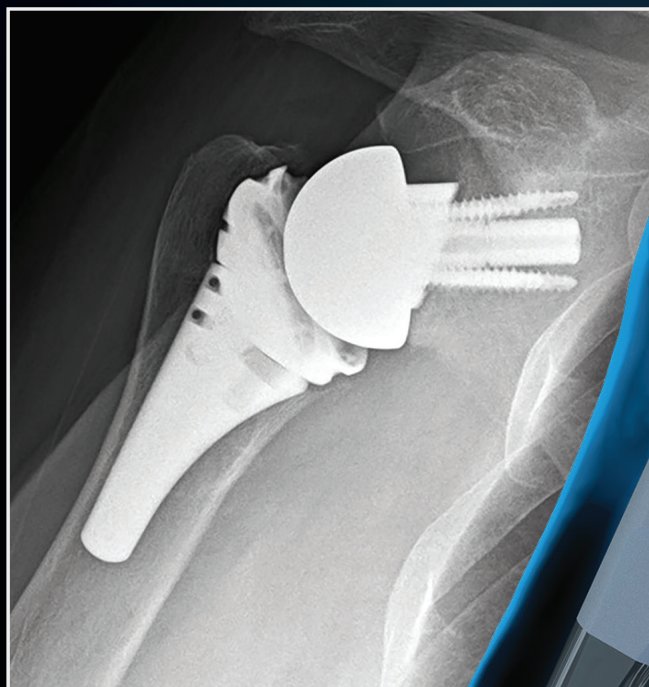


Univers Revers™ Total Shoulder System

*Celebrating Over 10 Years of
Positive Outcomes*



- Evolutions to the system over the years include options for screw or post fixation, augments, and multiple lateralization and glenosphere options
- 135° neck-shaft angle optimizes impingement-free range of motion and reduces scapular notching¹
- Inlay humeral design facilitates ideal soft-tissue tensioning²
- Fracture repair features include press-fit stem geometry, 135° inclination angle, and soft-tissue fixation points for good functional outcomes and reliable tuberosity healing³

*Learn more about the Univers
Revers Total Shoulder System*



References

1. Erickson BJ, et al. *J Shoulder Elbow Surg.* 2015;24(6):988-993. 2. Schmalzl J, et al. *BMC Musculoskelet Disord.* 2020;21(1):35. 3. Haidamous, et al. *JSES,* 29(12), 2556–2563.