

# CentaFlex™ Decellularized Human Placental Matrix



# CentaFlex™ Decellularized Human Placental Matrix

Stronger, more durable support for soft-tissue repair. Derived from human umbilical cord, CentaFlex placental matrix can be used as a surgical covering, wrap or barrier to protect damaged tissue.

## Features and Benefits

- › Robust and strong enough to hold a suture
- › Flexible to use across a wide variety of applications
- › Biological membrane covering or allograft used as a barrier or wrap to cushion and protect the surgical site and support wound management
- › Terminally sterile with 10-year shelf life
- › Ambient room temperature storage
- › Non–side-specific; can be placed regardless of orientation
- › Quickly hydrate CentaFlex matrix with a sterile fluid to maximize its flexibility and handling (average time needed is 10 seconds)

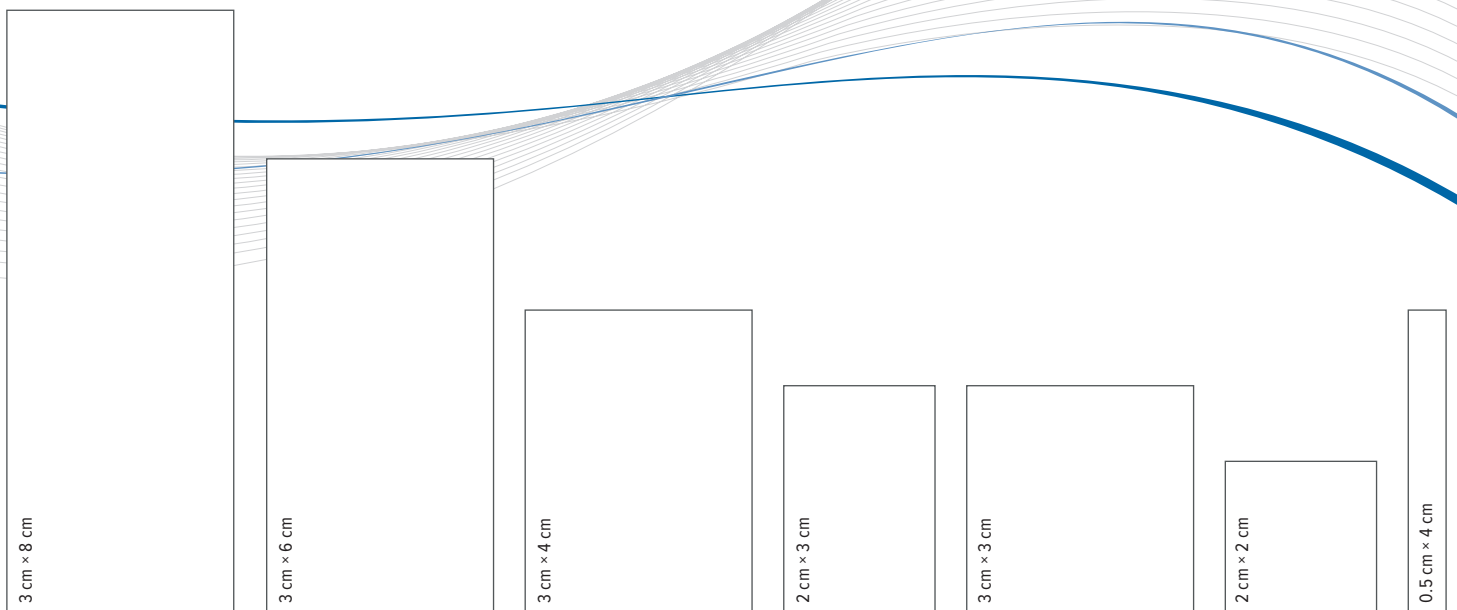
## The CentaFlex Placental Matrix Difference

**In vitro** data has shown decellularized, inert placental tissue scaffold provides a cell-friendly environment.<sup>1</sup>

- › Cell attachment is a natural stimulus for the orderly release of growth factors and cytokines

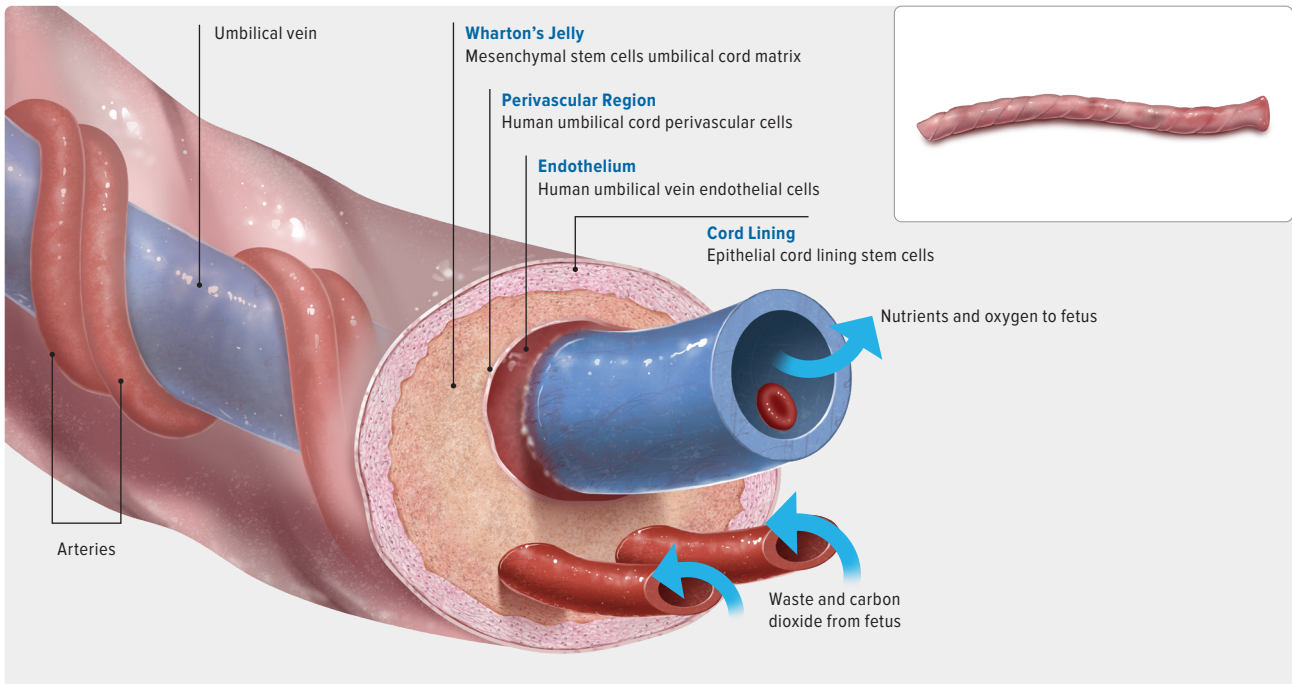
### Reference

1. Guo X, Kaplunovsky A, Zaka R, et al. Modulation of cell attachment, proliferation, and angiogenesis by decellularized, dehydrated human amniotic membrane in in vitro models. *Wounds*. 2017;29(1):28-38.



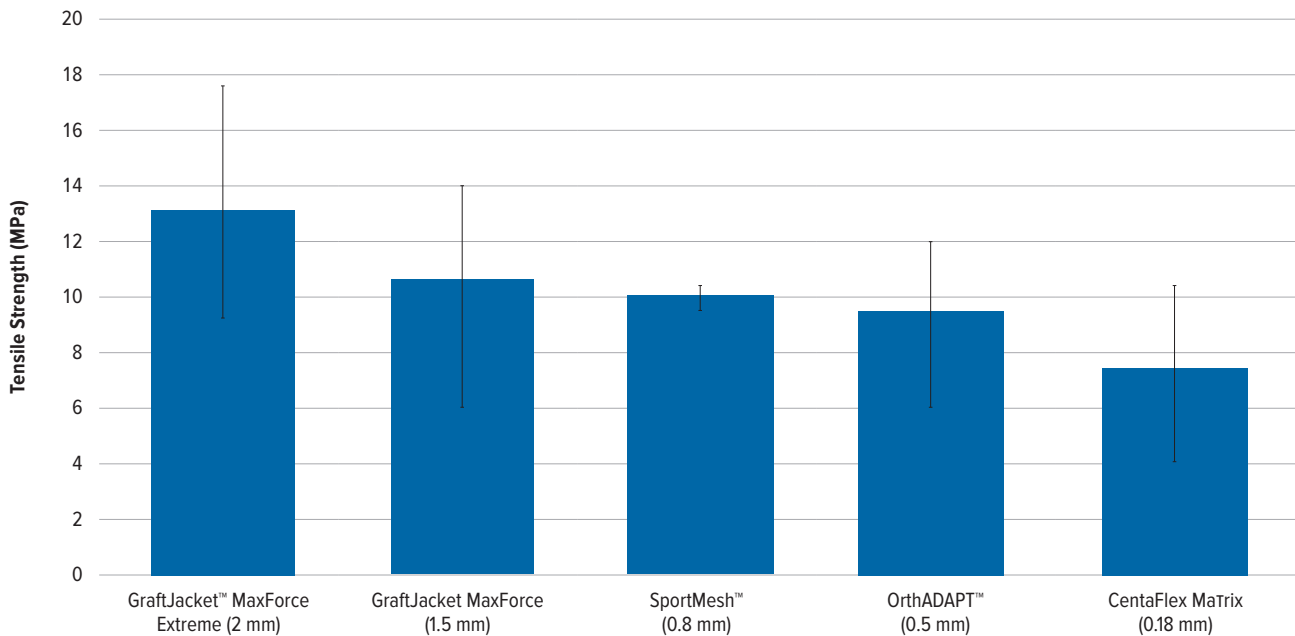
# Umbilical Cord Anatomy

CentaFlex™ matrix is derived from the cord lining of the umbilical cord.



## CentaFlex Placental Matrix Strength and Statistical Analysis

Biomechanical Testing of Commercially Available Soft-Tissue Augmentation Materials



| Group 1          | Group 2                      | P-Value  | Significance (p<0.05)         |
|------------------|------------------------------|----------|-------------------------------|
| CentaFlex Matrix | OrthADAPT                    | P=0.1635 | Not statistically significant |
| CentaFlex Matrix | SportMesh                    | P=0.0221 | Statistically significant     |
| CentaFlex Matrix | GraftJacket MaxForce         | P=0.1039 | Not statistically significant |
| CentaFlex Matrix | GraftJacket MaxForce Extreme | P=0.0012 | Statistically significant     |

Data on file at Celularity Inc.

Trademarks are the property of their respective owners.

## Ordering Information

|   |         |
|---|---------|
| CentaFlex™ Placental Matrix, 3 cm × 8 cm  | HPM0038 |
| CentaFlex Placental Matrix, 3 cm × 6 cm   | HPM0036 |
| CentaFlex Placental Matrix, 3 cm × 4 cm   | HPM0034 |
| CentaFlex Placental Matrix, 2 cm × 3 cm   | HPM0023 |
| CentaFlex Placental Matrix, 3 cm × 3 cm   | HPM0033 |
| CentaFlex Placental Matrix, 2 cm × 2 cm   | HPM0022 |
| CentaFlex Placental Matrix, 0.5 cm × 4 cm | HPM0054 |

Products advertised in this brochure/surgical technique guide may not be available in all countries. For information on availability, please contact Arthrex Customer Service or your local Arthrex representative.

## Indications for Use

CentaFlex placental matrix is an allograft used as a barrier or wrap to cushion and protect the surgical site and support wound management. It is intended for use as a biological membrane covering. As a barrier membrane, CentaFlex matrix is intended to protect the underlying tissue. Indications include, but are not limited to, surgical covering, wrap, or barrier.

## Contraindications, Warnings, and Precautions

- › CentaFlex matrix is contraindicated in patients with a known hyper-sensitivity to CentaFlex matrix.
- › If a patient has an adverse reaction related to the use of CentaFlex matrix, immediately discontinue its use.
- › CentaFlex matrix should not be used on clinically infected wounds.
- › The pouch contents are sterile if the pouch is unopened and undamaged. Do not use if package seal is broken. Discard material if mishandling has caused possible damage or contamination. Do not resterilize.
- › CentaFlex matrix must be used prior to the expiration date on the product pouch.
- › CentaFlex matrix should not be used together with a collagenase product on the wound.
- › For product information or adverse reaction reporting, call (800) 934-4404.
- › Please refer to CentaFlex Matrix package insert for complete product information.



CentaFlex is a registered trademark of Celularity Inc.

For product information or adverse reaction reporting, call (800) 934-4404.

Please refer to package insert for complete product information.

This description of technique is provided as an educational tool and clinical aid to assist properly licensed medical professionals in the usage of specific Arthrex products. As part of this professional usage, the medical professional must use their professional judgment in making any final determinations in product usage and technique. In doing so, the medical professional should rely on their own training and experience and should conduct a thorough review of pertinent medical literature and the product's directions for use. Postoperative management is patient-specific and dependent on the treating professional's assessment. Individual results will vary and not all patients will experience the same postoperative activity level or outcomes.



Arthrex manufacturer, authorized representative, and importer information (Arthrex eIFUs)



US patent information