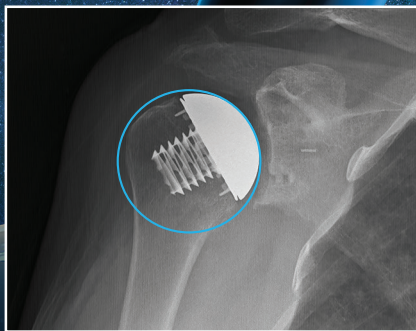
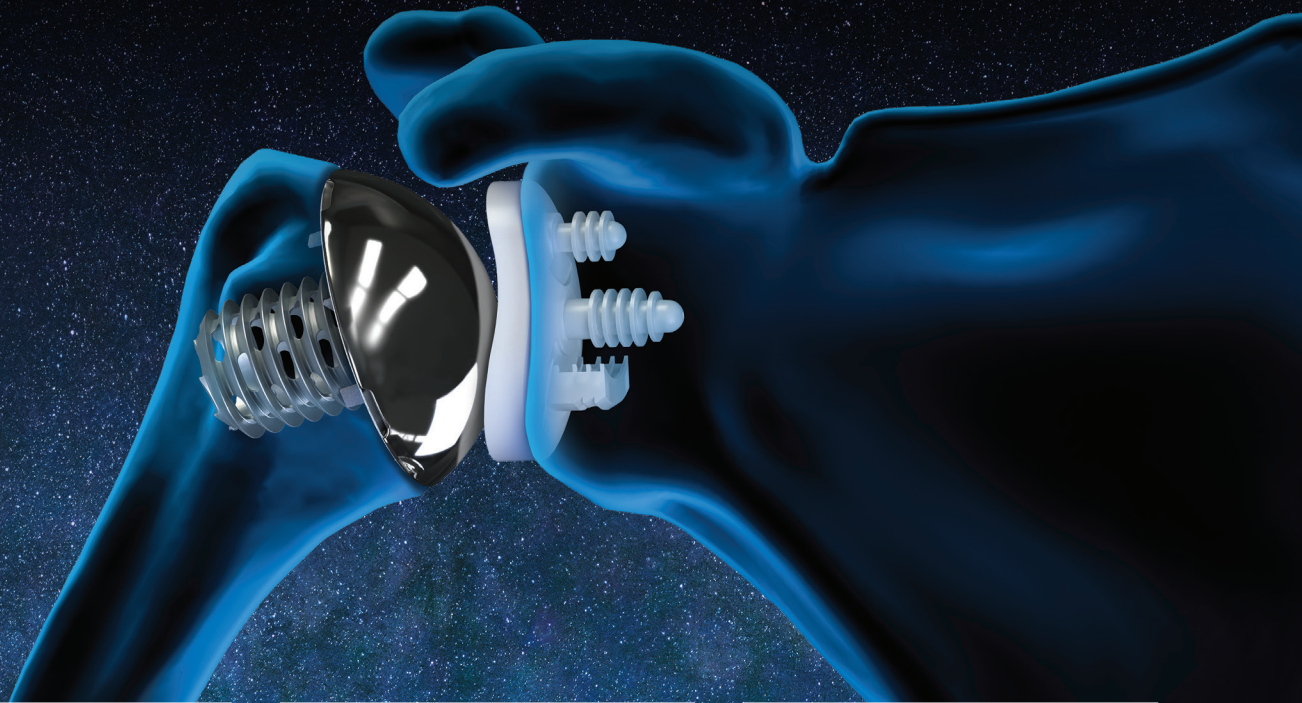


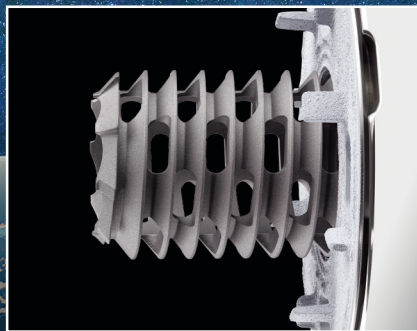
# Eclipse™ Total Shoulder System

## The Cage-Screw Difference

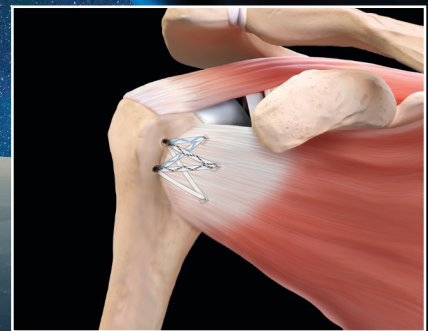
Backed by more than a decade of long-term survivorship data, this revision-friendly system includes standard and augmented glenoid options for a wide array of glenoid pathologies and titanium options for patients sensitive to nickel<sup>1,2</sup>



Anatomic restoration of center of rotation<sup>3</sup>



Proprietary cage-screw fixation preserves bone and reduces medial calcar resorption<sup>4</sup>



Reproducible, knotless anchor-based subscap repair system

Learn more about  
the Eclipse total  
shoulder system



### References

1. Habermeyer P, et al. *JSES Open Access*. 2019;3(4):234. doi:10.1016/j.jses.2019.10.013 2. Magosch P, et al. *J Shoulder Elbow Surg*. 2021;30(7):e343-e355. doi:10.1016/j.jse.2020.09.034 3. Sears BW, et al. *J Shoulder Elbow Surg*. 2023;32(2):240-246. doi:10.1016/j.jse.2022.07.024 4. Alikhah A, et al. *BMC Musculoskelet Disord*. 2020;21(1):295. doi:10.1186/s12891-020-03277-3



© 2023-08 Arthrex, Inc. All rights reserved. AD1-000597-en-US\_A