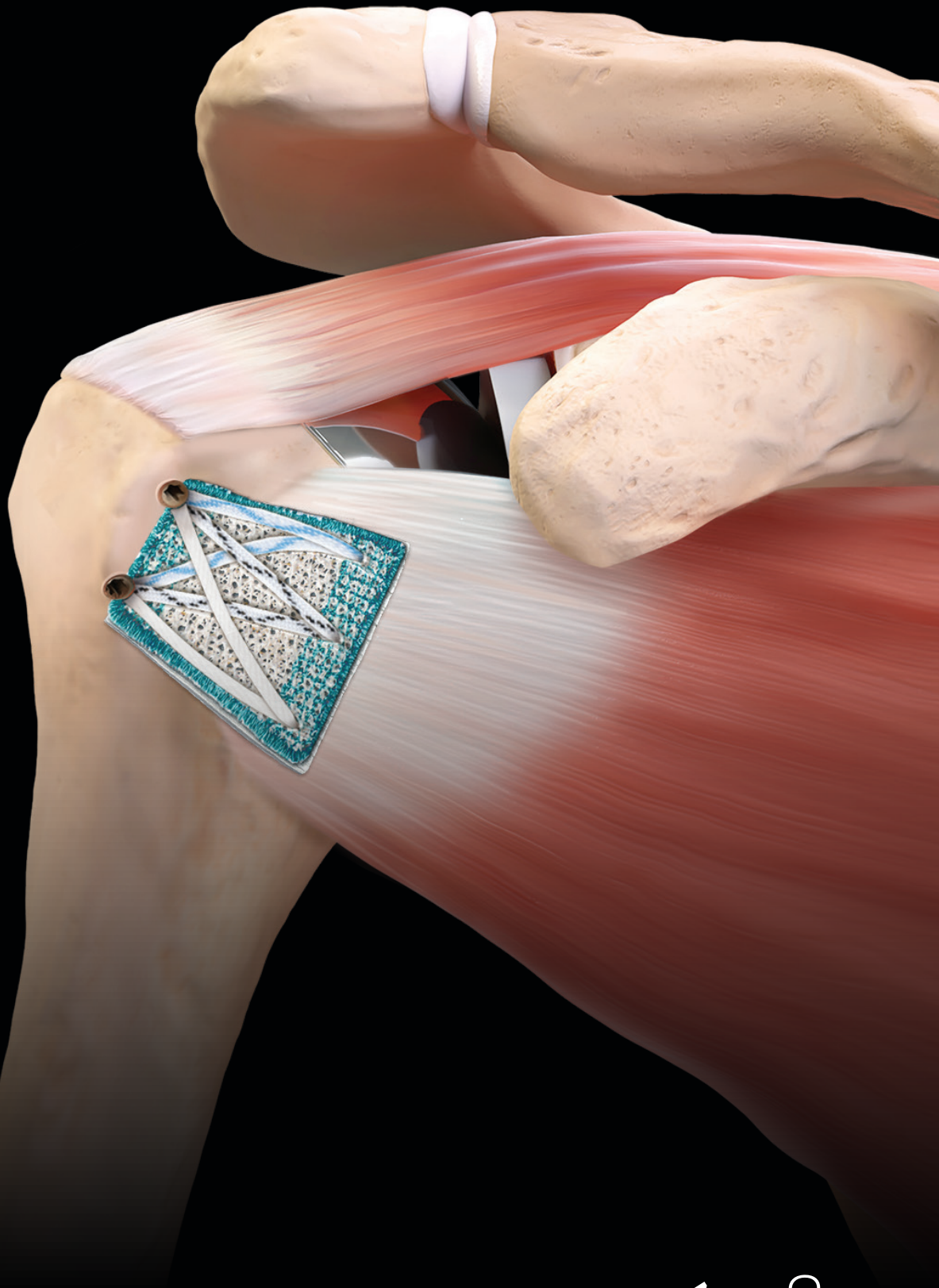


# SuturePatch Soft-Tissue Reinforcement

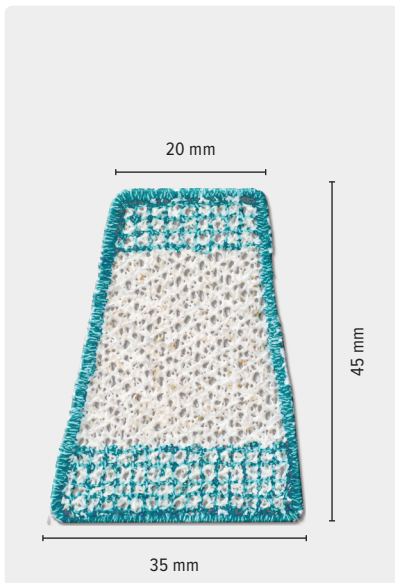


# SuturePatch Soft-Tissue Reinforcement

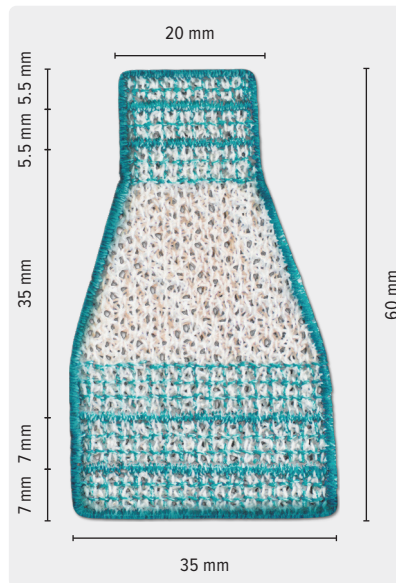
SuturePatch is a trimmable, all-polyester, nonabsorbable suture construct, designed to reinforce soft tissue. SuturePatch tissue reinforcement is indicated for managing and protecting soft-tissue injuries and reinforcing tendon repairs. It supports repairs performed with sutures or suture anchors, including rotator cuff, patellar, Achilles, distal biceps, quadriceps, pectoralis major, and other tendons. Sutures and anchors provide biomechanical strength, while SuturePatch reinforces and protects healing tissues.

## SuturePatch Trimming Guidance

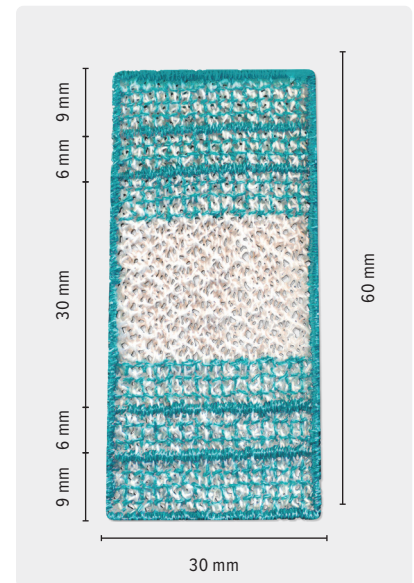
Some sizes of SuturePatch can be trimmed for use. When trimming, be sure to leave a reinforced, dark green border around the implant. Cutting into the white area can cause the SuturePatch to fray and lose its structural integrity.



Trapezoid, *not trimmable* (AR-7292)



Large trapezoid (AR-7291)



Rectangle (AR-7290)

## Use With Biologics

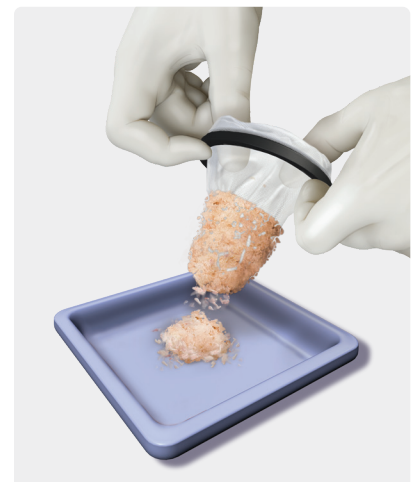
SuturePatch can be used in combination with autologous biologics, including bursa harvested using the GraftNet™ XL bone collection device or autologous biceps prepared with the Autograft Tissue Compression System (ATCS) plates.

### GraftNet XL Bone Collection Device

The GraftNet XL device is designed to maximize autologous graft collection and uses a large-volume mesh collection filter to easily integrate the patient's own cells into the procedure.

The harvested autologous tissue can be removed from the filter and implanted.

**Note:** If bone is harvested, autologous conditioned plasma (ACP) can be added to the autologous tissue as well.

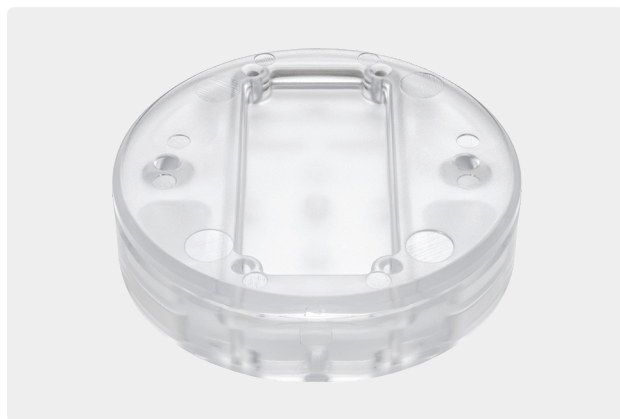


### Autograft Tissue Compression System

The ATCS is designed to create a graft using autologous tissue, such as a biceps tendon.



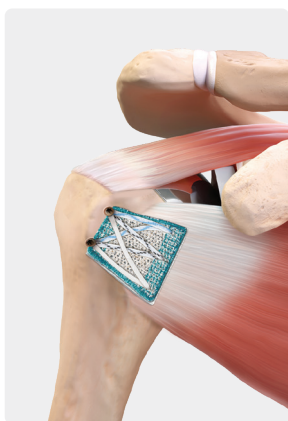
Four-Layer ATCS Plates, 22 mm × 27 mm (AR-19082)



ATCS Plates, long, 24 mm × 48 mm (AR-19087)

## Common Applications

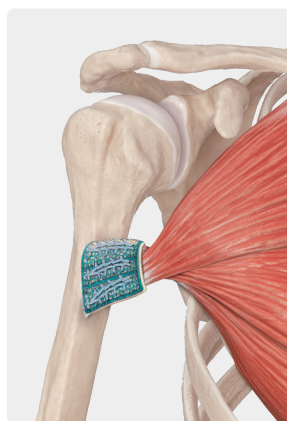
SuturePatch can be used in a variety of soft-tissue reinforcement applications, as shown below.



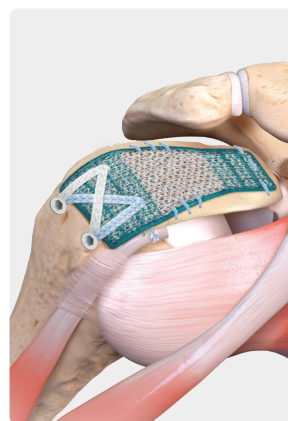
Subscapularis Augmentation



Achilles Augmentation



Pectoralis Major Augmentation



Superior Capsule Reconstruction

## Ordering Information

### SuturePatch Soft-Tissue Reinforcement

SuturePatch rectangle, 60 mm × 30 mm, 5/pack	AR-7290
SuturePatch large trapezoid, 60 mm × 35 mm, 5/pack	AR-7291
SuturePatch trapezoid, 45 mm × 35 mm, 5/pack	AR-7292

This description of technique is provided as an educational tool and clinical aid to assist properly licensed medical professionals in the usage of specific Arthrex products. As part of this professional usage, the medical professional must use their professional judgment in making any final determinations in product usage and technique. In doing so, the medical professional should rely on their own training and experience and should conduct a thorough review of pertinent medical literature and the product's directions for use. Postoperative management is patient-specific and dependent on the treating professional's assessment. Individual results will vary and not all patients will experience the same postoperative activity level or outcomes.



Arthrex manufacturer, authorized representative, and importer information (Arthrex eIFUs)



US patent information