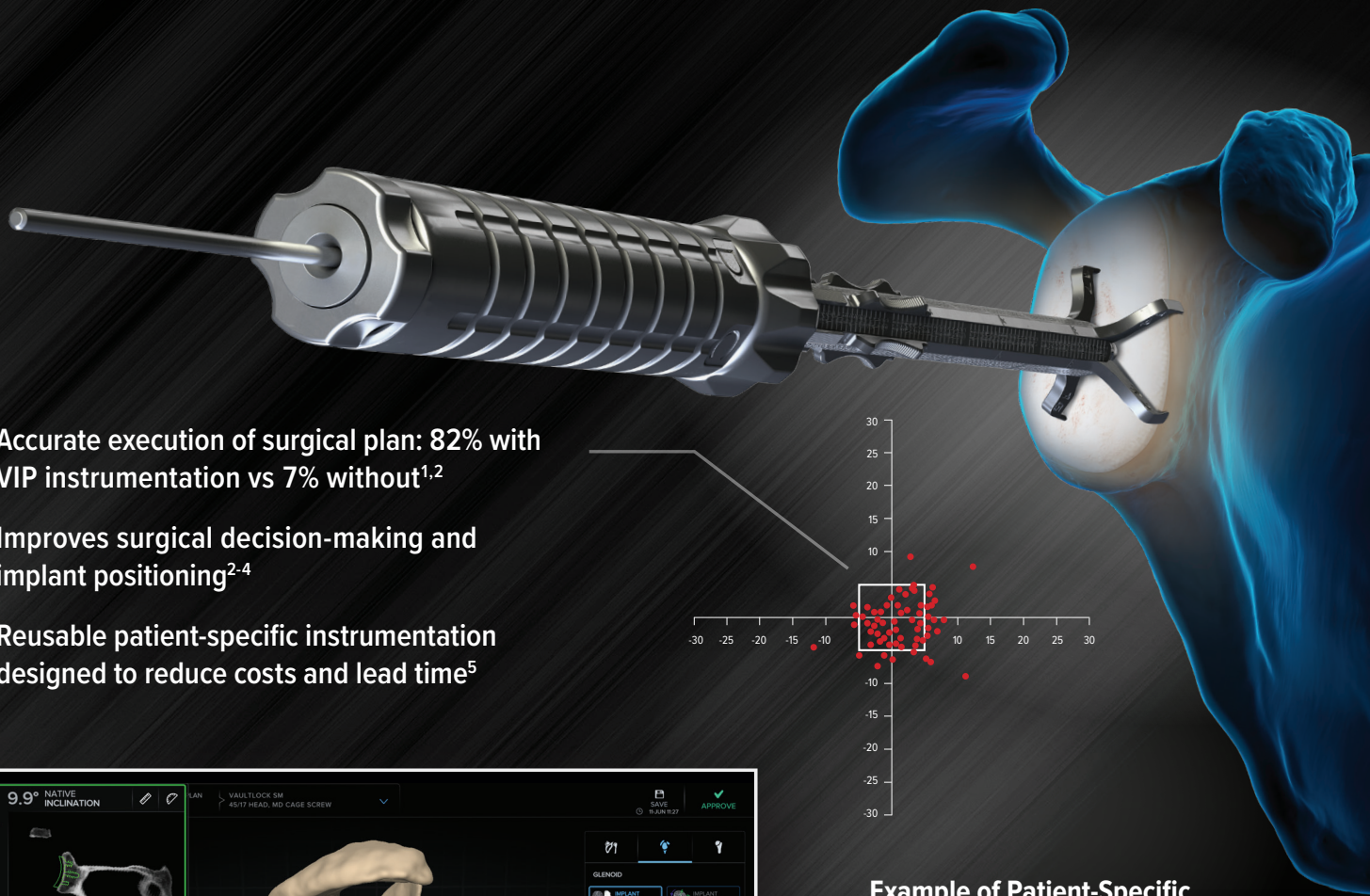
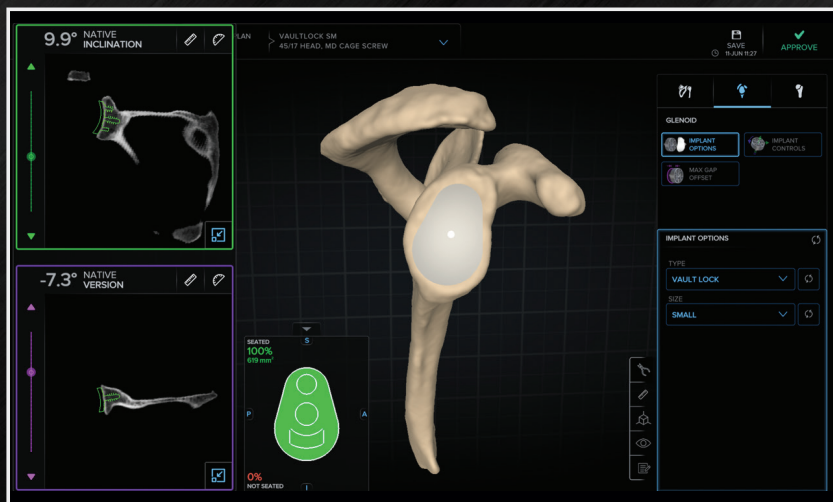
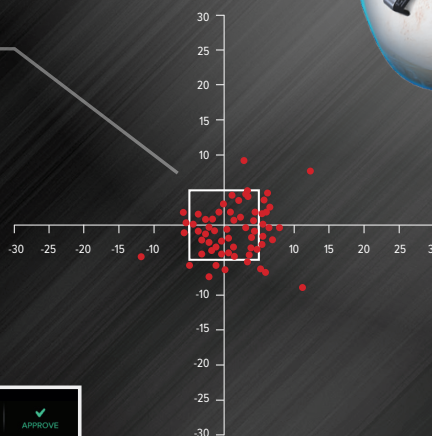


# Virtual Implant Positioning<sup>TM</sup> Targeter

## Reusable Patient-Specific Transfer Technology



- Accurate execution of surgical plan: 82% with VIP instrumentation vs 7% without<sup>1,2</sup>
- Improves surgical decision-making and implant positioning<sup>2-4</sup>
- Reusable patient-specific instrumentation designed to reduce costs and lead time<sup>5</sup>



Example of Patient-Specific Targeter Calibration

Slot	Targeter Leg Length (mm)	5D Glenoid Calibrator Height Settings
A	19 mm	Z 31 Anterior Overhang
B	15 mm	X 41 On Surface
C	12 mm	Y 30 On Surface
D	14 mm	X 33 On Surface
E	16 mm	Y 30 Anterior Overhang



Learn more about the  
VIP<sup>TM</sup> System

#### References

1. Iannotti J, et al. *J Bone Joint Surg Am.* 2014;96(9):e71.
2. Werner BS, et al. *J Shoulder Elbow Surg.* 2017;26(8):1477-1483.
3. Iannotti JP, et al. *J Bone Joint Surg Am.* 2019;101(5):446-457.
4. Heylen S. *J Shoulder Elbow Surg.* 2016;25(2):186-192.
5. Bhavya Sheth, MD, et al. *J Shoulder Elbow Surg.* 2022:454-458.

